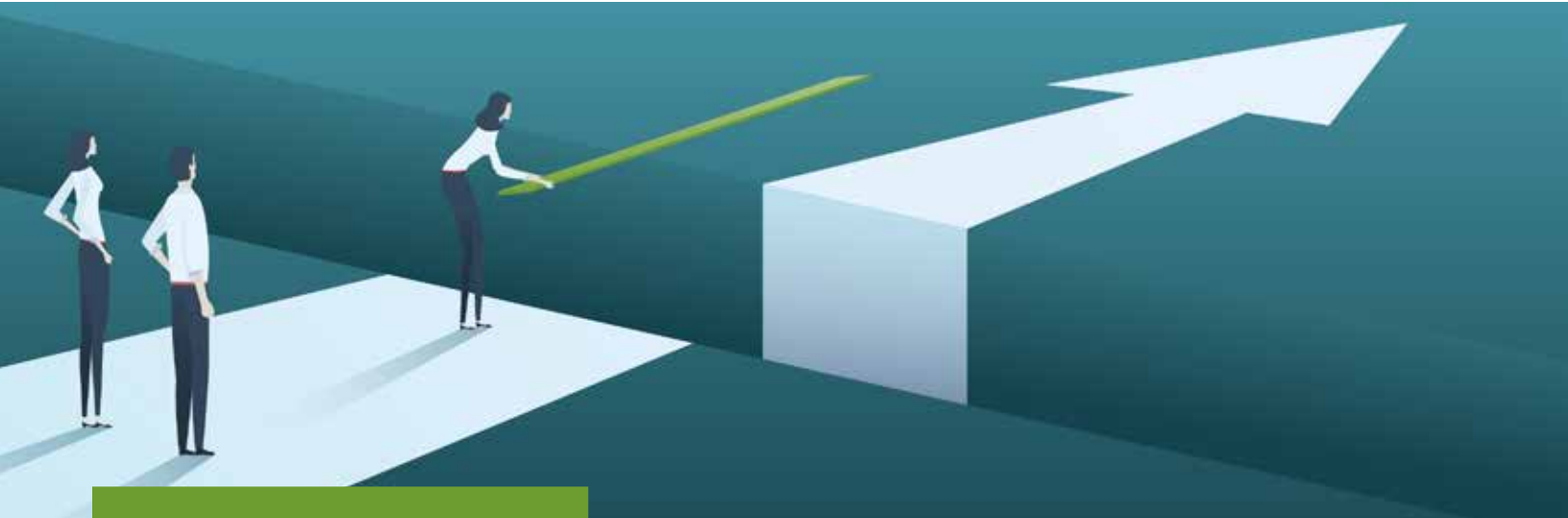


THE QUALTIM FAMILY OF BRANDS

Where building innovation thrives.



Fostering Intelligent Innovation

Our team is determined to cultivate success within the construction industry through:

- **Science-based** problem solving, engineering analysis, and testing.
- **Technical Support** for customers, material suppliers, and regulators.
- **Leadership** with a focus on collaboration, communication, and persistence.

We bridge the divides between tradition and innovation that can hamper our clients' ability to enter the market segments they desire to serve.



Join our team and help us push the bounds of tradition and status quo. Become a part of our culture where innovation flourishes.



Work alongside experienced professionals to advance your industry knowledge, while adding your unique point of view and expertise to our team.



Communicate directly with clients on a variety of projects to provide tailored solutions and outstanding customer service.

Scan to learn more about available career opportunities.

6300 Enterprise Lane | Madison, WI 53719 | 608.271.1176 | qualtim.com | info@qualtim.com

