



## Listing and Technical Evaluation Report™

A Duly Authenticated Report from an Approved Agency

Report No: 1407-09



Issue Date: August 11, 2014

Revision Date: December 19, 2024

Subject to Renewal: January 1, 2026

### DRYline® TSX (Black) Structural Sheathing

Trade Secret Report Holder:

National Shelter Products, Inc.

Phone: 425-557-7968

Website: [www.nationalshelter.com](http://www.nationalshelter.com)

Email: [support@nationalshelter.com](mailto:support@nationalshelter.com)

#### CSI Designations:

DIVISION: 06 00 00 - WOOD, PLASTICS AND COMPOSITES

Section: 06 12 00 - Structural Panels

Section: 06 12 19 - Shear Wall Panels

Section: 06 16 00 - Sheathing

DIVISION: 07 00 00 - THERMAL AND MOISTURE PROTECTION

Section: 07 25 00 - Water-Resistive Barriers/Weather Barriers

Section: 07 27 00 - Air Barriers

## 1 Innovative Product Evaluated<sup>1</sup>

1.1 DRYline TSX (Black) Structural Sheathing

## 2 Product Description and Materials

2.1 The innovative product evaluated in this report is shown in **Figure 1**.



Figure 1. DRYline TSX (Black) Structural Sheathing



2.2 DRYline TSX (Black) Structural Sheathing is a proprietary wall sheathing consisting of a proprietary fibrous sheathing board laminated with a water-resistant adhesive to facers on one or both sides. Facers may consist of aluminum foil, polyolefin film, aluminized polyolefin, or kraft paper.

### 2.3 Material Availability

#### 2.3.1 Thickness:

2.3.1.1 0.115" (2.92 mm)

#### 2.3.2 Standard Product Width:

2.3.2.1 48" (1,219 mm)

2.3.2.2 48<sup>3</sup>/<sub>4</sub>" (1,238 mm)

#### 2.3.3 Standard Lengths:

2.3.3.1 96" (2,438 mm)

2.3.3.2 108" (2,743 mm)

2.3.3.3 120" (3,048 mm)

2.3.3.4 Other sizes available by request.

2.4 As needed, review material properties for design in **Section 6** and the regulatory evaluation in **Section 8**.

## 3 Definitions

3.1 New Materials<sup>2</sup> are defined as building materials, equipment, appliances, systems or methods of construction not provided for by prescriptive and/or legislatively adopted regulations, known as alternative materials.<sup>3</sup> The design strengths and permissible stresses shall be established by tests<sup>4</sup> and/or engineering analysis.<sup>5</sup>

3.2 Duly authenticated reports<sup>6</sup> and research reports<sup>7</sup> are test reports and related engineering evaluations, which are written by an approved agency<sup>8</sup> and/or an approved source.<sup>9</sup>

3.2.1 These reports contain intellectual property and/or trade secrets, which are protected by the Defend Trade Secrets Act (DTSA).<sup>10</sup>

3.3 An approved agency is "approved" when it is ANAB ISO/IEC 17065 accredited. DrJ Engineering, LLC (DrJ) is listed in the ANAB directory.

3.4 An approved source is "approved" when a professional engineer (i.e., Registered Design Professional) is properly licensed to transact engineering commerce. The regulatory authority governing approved sources is the state legislature via its professional engineering regulations.<sup>11</sup>

3.5 Testing and/or inspections conducted for this duly authenticated report were performed by an ISO/IEC 17025 accredited testing laboratory, an ISO/IEC 17020 accredited inspection body and/or a licensed Registered Design Professional (RDP).

3.5.1 The Center for Building Innovation (CBI) is ANAB<sup>12</sup> ISO/IEC 17025 and ISO/IEC 17020 accredited.

3.6 The regulatory authority shall enforce<sup>13</sup> the specific provisions of each legislatively adopted regulation. If there is a non-conformance, the specific regulatory section and language of the non-conformance shall be provided in writing<sup>14</sup> stating the nonconformance and the path to its cure.

3.7 The regulatory authority shall accept duly authenticated reports from an approved agency and/or an approved source with respect to the quality and manner of use of new materials or assemblies as provided for in regulations regarding the use of alternative materials, designs, or methods of construction.<sup>15</sup>

3.8 ANAB is an International Accreditation Forum (IAF) Multilateral Recognition Arrangement (MLA) signatory where recognition of certificates, validation and verification statements issued by conformity assessment bodies accredited by all other signatories of the IAF MLA with the appropriate scope, shall be approved.<sup>16</sup> Therefore, all ANAB ISO/IEC 17065 duly authenticated reports are approval equivalent.<sup>17</sup>

3.9 Approval equity is a fundamental commercial and legal principle.<sup>18</sup>



## 4 Applicable Standards for the Listing; Regulations for the Regulatory Evaluation<sup>19</sup>

### 4.1 Standards

- 4.1.1 *ANSI/AWC SDPWS: Special Design Provisions for Wind and Seismic*
- 4.1.2 *ASCE/SEI 7: Minimum Design Loads and Associated Criteria for Buildings and Other Structures*
- 4.1.3 *ASTM D7989: Standard Practice for Demonstrating Equivalent In-Plane Lateral Seismic Performance to Wood-Frame Shear Walls Sheathed with Wood Structural Panels*
- 4.1.4 *ASTM E96: Standard Test Methods for Water Vapor Transmission of Materials*
- 4.1.5 *ASTM E330: Standard Test Method for Structural Performance of Exterior Windows, Doors, Skylights, and Curtain Walls by Uniform Static Air Pressure Difference*
- 4.1.6 *ASTM E2126: Standard Test Methods for Cyclic (Reversed) Load Test for Shear Resistance of Vertical Elements of the Lateral Force Resisting Systems for Buildings*
- 4.1.7 *ASTM E2178: Standard Test Method for Air Permeance of Building Materials*

### 4.2 Regulations

- 4.2.1 *IBC – 15, 18, 21: International Building Code®*
- 4.2.2 *IRC – 15, 18, 21: International Residential Code®*
- 4.2.3 *IECC – 15, 18, 21: International Energy Conservation Code®*
- 4.2.4 *FBC-B—20, 23: Florida Building Code – Building<sup>20</sup> (FL47188)*
- 4.2.5 *FBC-R—20, 23: Florida Building Code – Residential<sup>20</sup> (FL47188)*

## 5 Listed<sup>21</sup>

- 5.1 Equipment, materials, products or services included in a List published by a nationally recognized testing laboratory (i.e., CBI), approved agency (i.e., CBI and DrJ), and/or approved source (i.e., DrJ) or other organization concerned with product evaluation (i.e., DrJ) that maintains periodic inspection (i.e., CBI) of production of listed equipment or materials, and whose listing states either that the equipment or material meets nationally recognized standards or has been tested and found suitable for use in a specified manner.

## 6 Tabulated Properties Generated from Nationally Recognized Standards

### 6.1 General

- 6.1.1 DRYline TSX (Black) Structural Sheathing is used as wall sheathing in buildings constructed in accordance with the IRC and IBC for light-frame wood construction.
- 6.1.2 DRYline TSX (Black) Structural Sheathing is used as structural wall sheathing to provide lateral load resistance (wind and seismic) for braced wall panels used in light-frame wood construction.
- 6.1.3 DRYline TSX (Black) Structural Sheathing panels are permitted to be used as wall sheathing in buildings constructed in accordance with the IBC requirements for Type V light-frame construction.
- 6.1.4 DRYline TSX (Black) Structural Sheathing panels are used as structural wall sheathing to provide resistance to transverse loads for wall assemblies used in light-frame wood construction.
- 6.1.5 DRYline TSX (Black) Structural Sheathing is used as a non-structural wall sheathing applied as in-fill to portions of walls that are not designed as shear walls.
- 6.1.6 When DRYline TSX (Black) Structural Sheathing is installed in accordance with **Section 6.3** and **Section 9**, it is an approved alternative Water-Resistive Barrier (WRB) in accordance with IBC Section 1403.2<sup>22</sup> and IRC Section R703.2.
- 6.1.7 DRYline TSX (Black) Structural Sheathing is an approved air barrier material when installed in accordance with **Section 6.4** and **Section 9**.



## 6.2 Structural Applications

### 6.2.1 General Structural Provisions:

- 6.2.1.1 Except as otherwise described in this report, DRYline TSX (Black) Structural Sheathing shall be installed in accordance with the applicable building codes listed in **Section 4** using the provisions set forth herein for the design and installation of Wood Structural Panels (WSP).
  - 6.2.1.1.1 DRYline TSX (Black) Structural Sheathing is permitted to be designed in accordance with SDPWS for the design of shear walls using the methods set forth therein, including the perforated shear wall methodology, and are subject to the SDPWS boundary conditions, except as specifically allowed in this report.
- 6.2.1.2 Anchorage for in-plane shear shall be provided to transfer the induced shear force into and out of each shear wall.
  - 6.2.1.2.1 For wind design, anchor bolt spacing shall not exceed 6' o.c. (1829 mm).
  - 6.2.1.2.2 For seismic design, anchor bolt spacing shall not exceed 4' o.c. (1219 mm).
- 6.2.1.3 The maximum aspect ratio for DRYline TSX (Black) Structural Sheathing shall be 4:1.
- 6.2.1.4 The minimum full height panel width shall be 24" (610 mm).
- 6.2.1.5 All panel edges shall be supported with a minimum 2" (51 mm) nominal lumber.
- 6.2.1.6 Staples shall be a minimum 16-gauge, <sup>15</sup>/<sub>16</sub>" crown and penetrate a minimum of 1" into the stud.
- 6.2.1.7 Installation is permitted for single top plate (advanced framing method) or double top plate application.
- 6.2.1.8 Where the sheathing from an upper story extends over the rim joist and overlaps a lower story, the sheathing shall be fastened along the sole plate of the story above at 3" o.c. Further, one row of fasteners spaced 12" o.c. shall be located along the bottom third of the rim joist. The sheathing from the story above shall overlap the sheathing on the story below by a minimum of 2". Fastening along the bottom edge of the sheathing from the story above is not required.

### 6.2.2 Prescriptive IRC Bracing Applications:

- 6.2.2.1 DRYline TSX (Black) Structural Sheathing may be used on braced wall lines as an equivalent alternative to Method WSP of the IRC, when installed in accordance with IRC Section R602.10 and this report.
- 6.2.2.2 For wind design, required braced wall panel lengths for DRYline TSX (Black) Structural Sheathing shall be as shown in **Table 1**, and shall be used in conjunction with IRC Table R602.10.3(2), which provides the required adjustments.
- 6.2.2.3 For seismic design, required braced wall panel lengths for DRYline TSX (Black) Structural Sheathing shall be as shown in **Table 2**, and shall be used in conjunction with IRC Table R602.10.3(4), which provides the required adjustments.
- 6.2.2.4 Use of DRYline TSX (Black) Structural Sheathing with Method CS-PF is also permitted in accordance with **Section 6.2.3**, in lieu of WSP specified in accordance with IRC Section R602.10.6.4.
- 6.2.2.5 Use of DRYline TSX (Black) Structural Sheathing with Method PFH is permitted in accordance with **Section 6.2.4** in lieu of WSP specified in accordance with IRC Section R602.10.6.4.
- 6.2.2.6 Where a building, or portion thereof, does not comply with one or more of the bracing requirements within the prescriptive section of the IRC, those portions shall be designed and constructed in accordance with IRC Section R301.1.



**Table 1.** Required Bracing Lengths for DRYline TSX (Black) Structural Sheathing  
Installed with 1/2" Gypsum Wallboard at 16" o.c. Stud Spacing – Wind ( $V_{ult}$ )<sup>1,2,3,4,5</sup>

Condition	Braced Wall Line Spacing	DRYline TSX (Black) Structural Sheathing INTERMITTENT SHEATHING					DRYline TSX (Black) Structural Sheathing CONTINUOUS SHEATHING				
		Nails or Staples 3" o.c. Edges and in the Field					Nails or Staples 3" o.c. Edges and in the Field				
		Length of Wall Line to be Braced (ft)					Length of Wall Line to be Braced (ft)				
		≤ 110 mph	≤ 115 mph	≤ 120 mph	≤ 130 mph	≤ 140 mph	≤ 110 mph	≤ 115 mph	≤ 120 mph	≤ 130 mph	≤ 140 mph
One Story or the Top of Two or Three Stories	10	1.7	1.7	2.1	2.1	2.5	1.2	1.7	1.7	2.1	2.1
	20	2.9	2.9	3.3	4.2	4.6	2.5	2.9	2.9	3.3	4.2
	30	4.2	4.6	5.0	5.8	6.6	3.7	3.7	4.2	5.0	5.8
	40	5.4	5.8	6.6	7.5	8.7	4.6	5.0	5.4	6.2	7.5
	50	6.6	7.5	7.9	9.1	10.8	5.8	6.2	6.6	7.9	9.1
	60	7.9	8.7	9.5	10.8	12.5	6.6	7.5	7.9	9.1	10.8
First Story of Two Stories or Second Story of Three Stories	10	2.9	3.3	3.7	4.2	5.0	2.5	2.9	2.9	3.7	4.2
	20	5.4	6.2	6.6	7.9	9.1	4.6	5.4	5.8	6.6	7.5
	30	7.9	8.7	9.5	11.2	12.9	6.6	7.5	7.9	9.5	10.8
	40	10.4	11.2	12.5	14.5	16.6	8.7	9.5	10.4	12.5	14.1
	50	12.9	13.7	14.9	17.8	20.3	10.8	11.6	12.9	14.9	17.4
	60	14.9	16.6	17.8	20.8	24.1	12.9	14.1	15.4	17.8	20.8
First Story of Three Stories	10	4.6	5.0	5.4	6.2	7.1	3.7	4.2	4.6	5.4	6.2
	20	8.3	9.1	9.5	11.2	13.3	7.1	7.5	8.3	9.5	11.2
	30	11.6	12.9	14.1	16.2	19.1	10.0	10.8	12.0	14.1	16.2
	40	15.4	16.6	18.3	21.2	24.5	12.9	14.1	15.4	18.3	20.8
	50	18.7	20.3	22.4	26.1	30.3	15.8	17.4	19.1	22.0	25.7
	60	22.0	24.1	26.6	31.1	35.7	19.1	20.8	22.4	26.1	30.3

SI: 1 in = 25.4 mm, 1 mph = 1.61 km/h

1. Demonstrates equivalency to IRC Table R602.10.3(1). All adjustment factors from IRC Table R602.10.3(2) shall be applied, except when used with method CS-PF. When used with method CS-PF, a minimum of 1/2" gypsum sheathing shall be applied to the interior side of the wall assembly and fastened with a minimum 5d cooler nails or 1 1/4" #6 types W or S screws spaced 8" o.c. at panel edges and 8" o.c. in the field of the panels.
2. DRYline TSX (Black) Structural Sheathing shall be installed with minimum 0.120" x 1 1/4" galvanized roofing nail or minimum 15/16" crown x 1 1/4" leg 16-gauge galvanized staples.
3. Where gypsum wallboard is not applied to the interior side of the wall assembly, bracing lengths shall be multiplied by a factor of 1.7.
4. Linear interpolation is permitted.
5. Wind speeds shown are  $V_{ult}$  in accordance with ASCE 7-16 and ASCE 7-22. To convert to equivalent  $V_{asd}$  wind speed,  $V_{asd} = V_{ult} / 1.26$ .

**Table 2.** Required Bracing for DRYline TSX (Black) Structural Sheathing Intermittent Sheathing  
Installed with 1/2" Gypsum Wallboard at 16" o.c. Stud Spacing – Seismic<sup>1,2,3,4,5</sup>

Condition	Braced Wall Line Length (ft)	DRYline TSX (Black) Structural Sheathing INTERMITTENT SHEATHING				DRYline TSX (Black) Structural Sheathing CONTINUOUS SHEATHING			
		Nails or Staples 3" o.c. Edges and in the Field				Nails or Staples 3" o.c. Edges and in the Field			
		Minimum Length of Braced Wall Panels Required along each Braced Wall Line (ft)				Minimum Length of Braced Wall Panels Required along each Braced Wall Line (ft)			
		SDC <sup>7</sup> C <sup>6</sup>	SDC <sup>7</sup> D <sub>0</sub>	SDC <sup>7</sup> D <sub>1</sub>	SDC <sup>7</sup> D <sub>2</sub>	SDC <sup>7</sup> C <sup>6</sup>	SDC <sup>7</sup> D <sub>0</sub>	SDC <sup>7</sup> D <sub>1</sub>	SDC <sup>7</sup> D <sub>2</sub>
One Story or the Top of Two or Three Stories	10	1.4	1.5	1.7	2.1	1.2	1.4	1.4	1.8
	20	2.6	3.0	3.3	4.2	2.2	2.5	2.8	3.6
	30	4.0	4.5	5.0	6.3	3.4	3.8	4.2	5.3
	40	5.3	6.0	6.6	8.3	4.5	5.1	5.7	7.0
	50	6.6	7.4	8.3	10.4	5.7	6.4	7.0	8.8
First Story of Two Stories or Second Story of Three Stories	10	2.5	3.1	3.7	4.6	2.2	2.6	3.1	3.9
	20	5.0	6.3	7.4	9.1	4.2	5.3	6.4	7.8
	30	7.4	9.4	11.2	13.7	6.4	8.0	9.5	11.6
	40	10.0	12.4	15.0	18.3	8.5	10.6	12.7	15.5
	50	12.4	15.6	18.7	22.8	10.6	13.3	15.8	19.4
First Story of Three Stories	10	3.7	4.4	5.0	NP	3.1	3.7	4.2	NP
	20	7.4	8.7	10.0	NP	6.4	7.4	8.5	NP
	30	11.2	13.1	15.0	NP	9.5	11.1	12.7	NP
	40	15.0	17.4	19.9	NP	12.7	14.9	16.9	NP
	50	18.7	21.8	24.9	NP	15.8	18.5	21.2	NP

SI: 1 in = 25.4 mm

- Demonstrates equivalency to IRC Table R602.10.3(3). All adjustment factors from IRC Table R602.10.3(4) shall be applied, except when used with method CS-PF. When used with method CS-PF, a minimum of 1/2" gypsum sheathing shall be applied to the interior side of the wall assembly and fastened with a minimum 5d cooler nails or 1 1/4" #6 types W or S screws spaced 8" o.c. at panel edges and 8" o.c. in the field of the panels.
- DRYline TSX (Black) Structural Sheathing shall be installed with minimum 0.120" x 1 1/4" galvanized roofing nail or minimum 15/16" crown x 1 1/4" leg 16-gauge galvanized staples.
- Tabulated bracing lengths are based on the following:
  - Soil Class D
  - Wall height = 10'
  - 10 psf floor dead load
  - 15 psf roof/ceiling dead load
  - Braced wall line spacing ≤ 25'
- Linear interpolation is permitted.
- Where gypsum wallboard is not applied to the interior side of the wall assembly, bracing lengths shall be multiplied by a factor of 1.7.
- Townhouses only.
- SDC = Seismic Design Coefficients

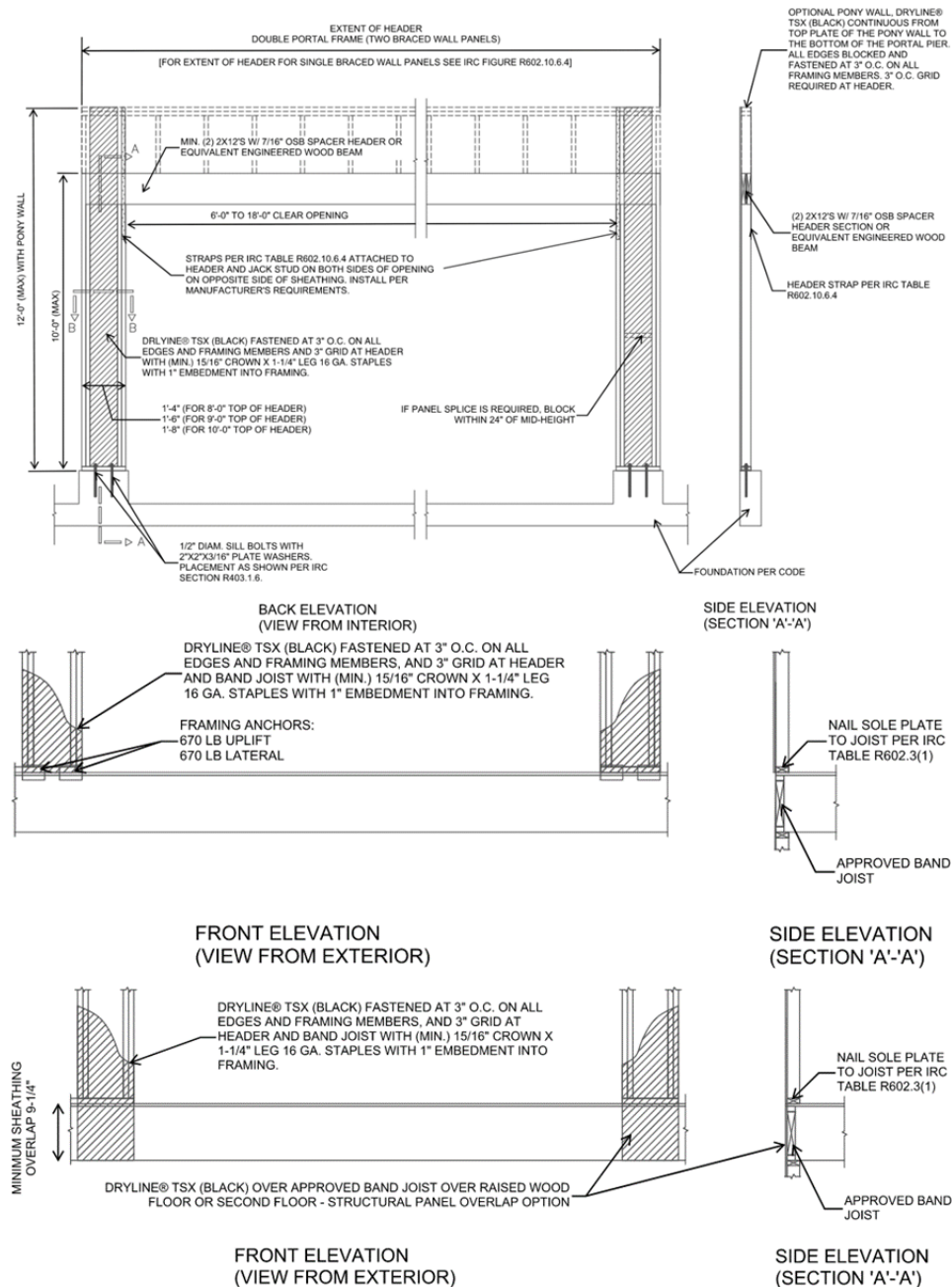
### 6.2.3 DRYline TSX (Black) Structural Sheathing CS-PF Portal Frame:

- 6.2.3.1 A "DRYline TSX (Black) Structural Sheathing CS-PF" was tested and evaluated for equivalency to the IRC Method CS-PF (Continuous Sheathed Portal Frame) in accordance with IRC Section R602.10.6.4 and IRC Table R602.10.6.4.



6.2.3.2 IRC Section R602.10.5 establishes the contributing length of bracing of the CS-PF. IRC Table R602.10.5 shall be used to determine the equivalent bracing length for the DRYline TSX (Black) Structural Sheathing CS-PF. The capacity of DRYline TSX (Black) Structural Sheathing CS-PF exceeds the capacity of the IRC Method CS-WSP and is therefore, permitted to be substituted for an equivalent length of bracing.

6.2.3.3 The DRYline TSX (Black) Structural Sheathing CS-PF is shown in **Figure 2**.



**Figure 2.** DRYline TSX (Black) Structural Sheathing CS-PF



#### 6.2.4 DRYline TSX (Black) Structural Sheathing Method PFH:

- 6.2.4.1 In accordance with the IRC Section R602.10.6.2, the PFH referenced in the IRC is permitted to be an equivalent replacement for a 4' length of Method WSP bracing.
- 6.2.4.2 Testing of the DRYline TSX (Black) Structural Sheathing PFH assemblies was conducted and compared to testing of Method WSP braced wall panel assemblies using Oriented Strand Board (OSB) to determine whether equivalence could be achieved for the DRYline TSX (Black) Structural Sheathing PFH.
- 6.2.4.3 The portal frames were tested in accordance with ASTM E2126 testing procedures and analysis per ASTM D7989. Testing determined their lateral resistance within an identical braced wall line using Method WSP braced wall panels so that a direct performance comparison could be made between the two series of tests.
- 6.2.4.4 A comparison of the WSP braced wall lines, and the DRYline TSX (Black) Structural Sheathing 12" PFH and 24" PFH, is shown in **Table 3**.

**Table 3.** Design Values for PFH Option 1 or Option 2<sup>1,2,3</sup>

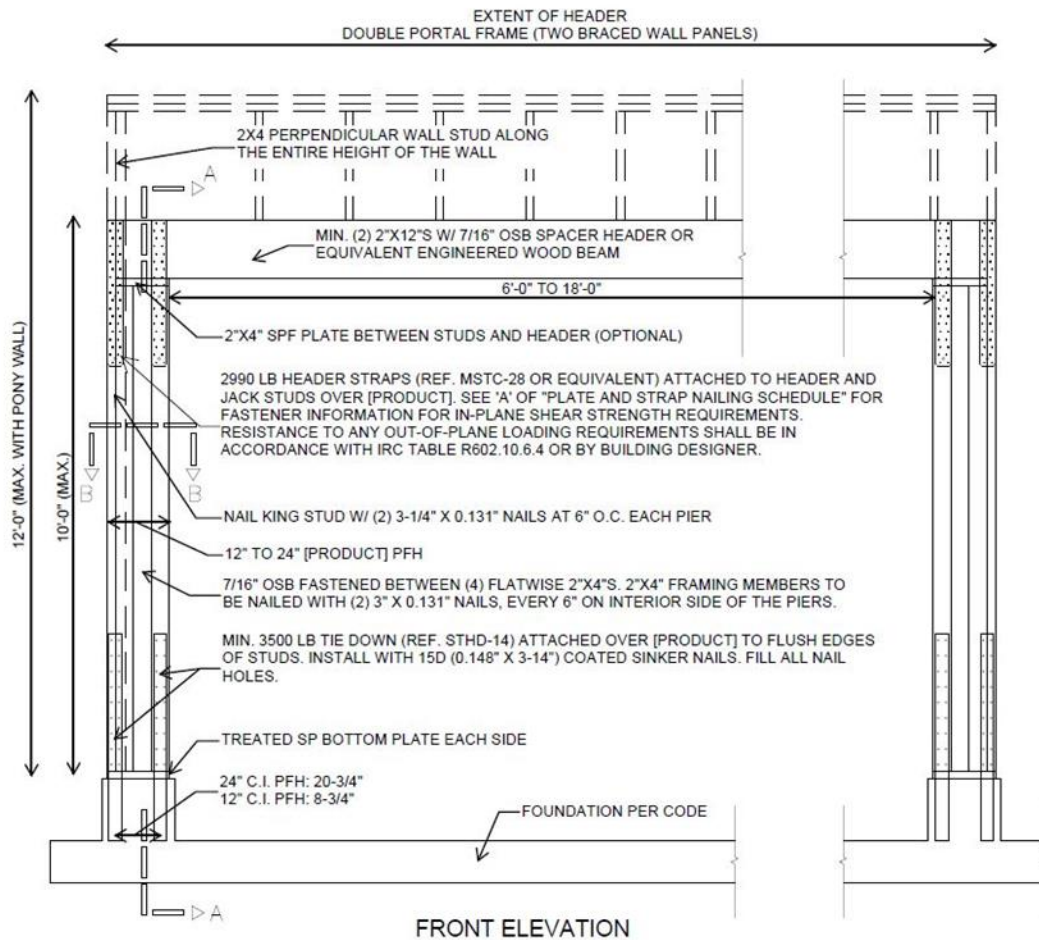
Test Name	Sheathing Method	Option	Fastener Size and Spacing	Total Bracing Width (in)	Maximum Wall Height (ft)	ASD Allowable Design Value per Panel/Pier <sup>4,5</sup> (lbs)
IBC/IRC Benchmark	3/8" OSB, Isolated 4'x8' panels	N/A	2 3/8" x 0.113Ø nails, 6:12 spacing	96	Up to 10	700
12" PFH	DRYline TSX (Black) Structural Sheathing	Option 1	See <b>Figure 3</b> to <b>Figure 6</b>	12	8	1,280
					10	960
12" PFH	DRYline TSX (Black) Structural Sheathing	Option 2	See <b>Figure 7</b> to <b>Figure 9</b>	12	8	1,410
					10	1,060
24" PFH	DRYline TSX (Black) Structural Sheathing	Option 1 or 2	See <b>Figure 3</b> to <b>Figure 6</b> , or <b>Figure 7</b> to <b>Figure 9</b>	24	8	2,560
					10	1,920

SI: 1 in = 25.4 mm, 1 lb. = 4.45 N

- Capacity derived from multiple full-scale tests, showing the capacity of OSB sheathing in buildings constructed in accordance with the minimum requirements of the IRC.
- The PFH bracing type in the IRC/IBC is defined as equivalent to a 4' BWP using 3/8" WSP. Equivalent capacity is based on comparison testing of the PFH and 3/8" OSB as compared to the published capacities as defined in the IBC and SDPWS.
- For seismic design, reduce capacities by a factor of 1.4.
- Interpolation between the wall heights and pier widths for the 12" PFH and 24" PFH is permitted.
- 10' high wall design values are provided here that use a seventy-five percent (75%) factor to reduce the 8' high wall design values generated by test data.

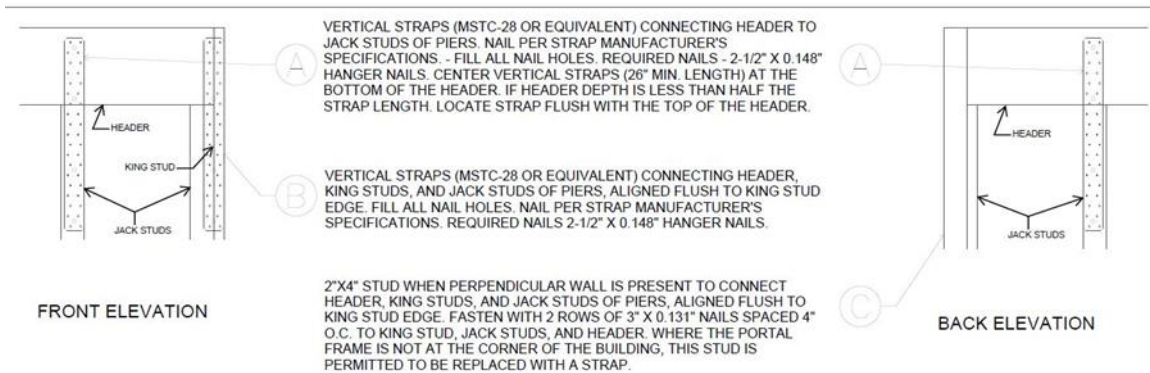


- 6.2.4.5 As detailed in **Figure 3** through **Figure 6**, or **Figure 7** through **Figure 9**, the maximum allowable compressive strength of the DRYline TSX (Black) Structural Sheathing 12" to 24" PFH is 11,156 lbs. per pier. Additional compressive capacity may be engineered into each pier.
- 6.2.4.6 There are two construction options for the PFH with DRYline TSX (Black) Structural Sheathing.
- 6.2.4.6.1 *PFH Assembly – Option 1:*
- 6.2.4.6.1.1 The DRYline TSX (Black) Structural Sheathing Option 1 12" PFH and 24" PFH is constructed in accordance with **Figure 3** through **Figure 6**.
- 6.2.4.6.1.2 In PFH Assembly Option 1, the piers consist of  $\frac{7}{16}$ " OSB sandwiched between nominal 2 x 4 studs installed flatwise with additional 2 x 4 studs framing the outside corner (**Figure 6**).

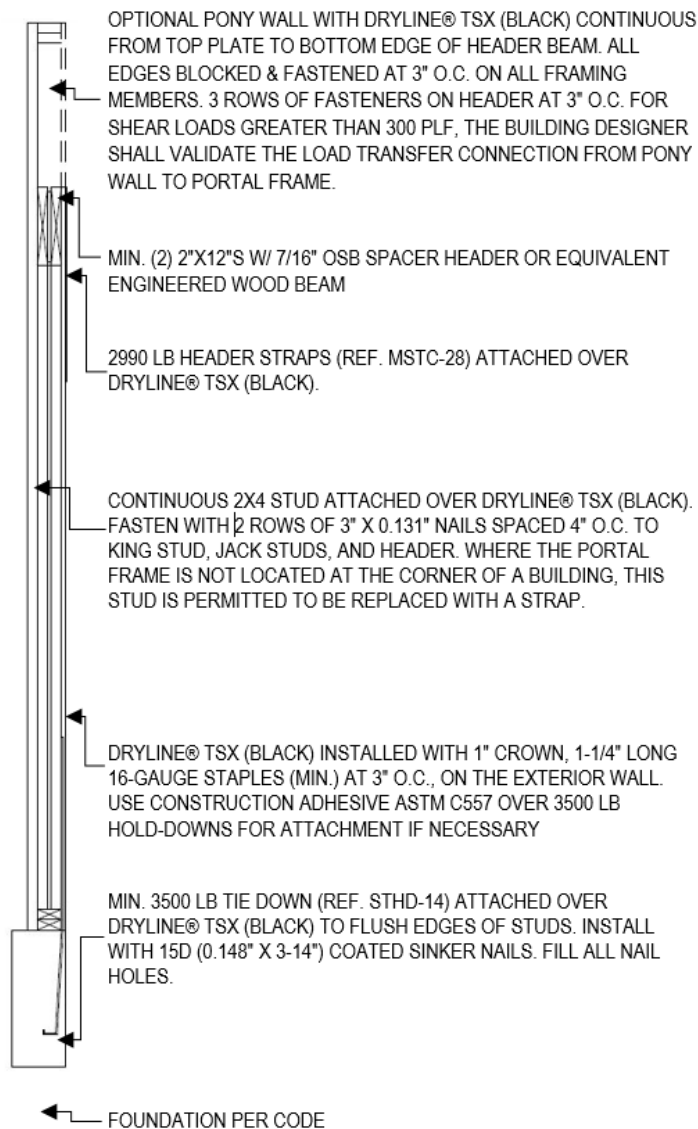


**Figure 3 . Construction Details of DRYline TSX (Black) 12" to 24" PFH**

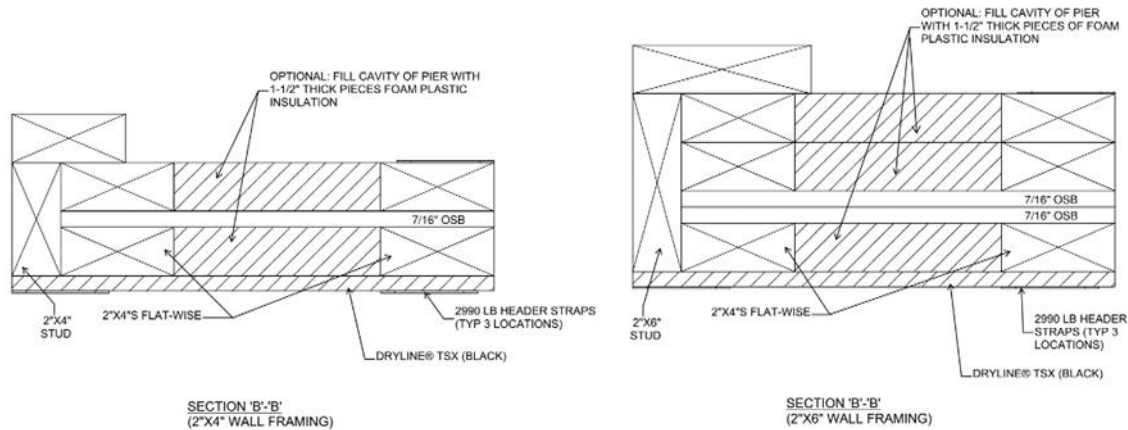
#### STRAP NAILING SCHEDULE



**Figure 4. Header Connection Detail**



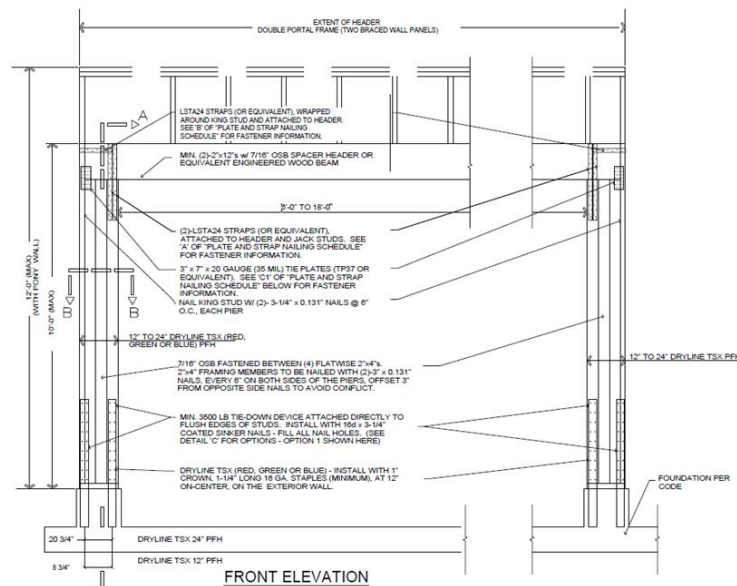
**Figure 5. PFH Section A-A**



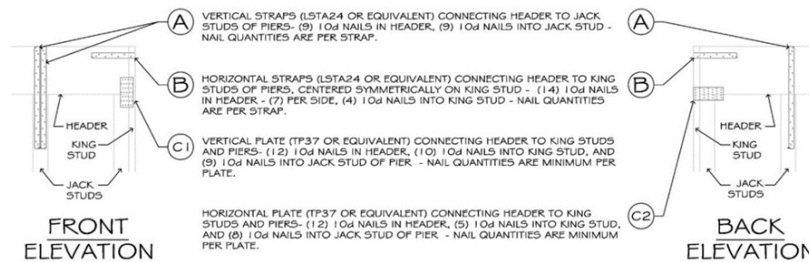
**Figure 6. PFH Section B-B**

#### 6.2.4.6.2 PFH Assembly – Option 2:

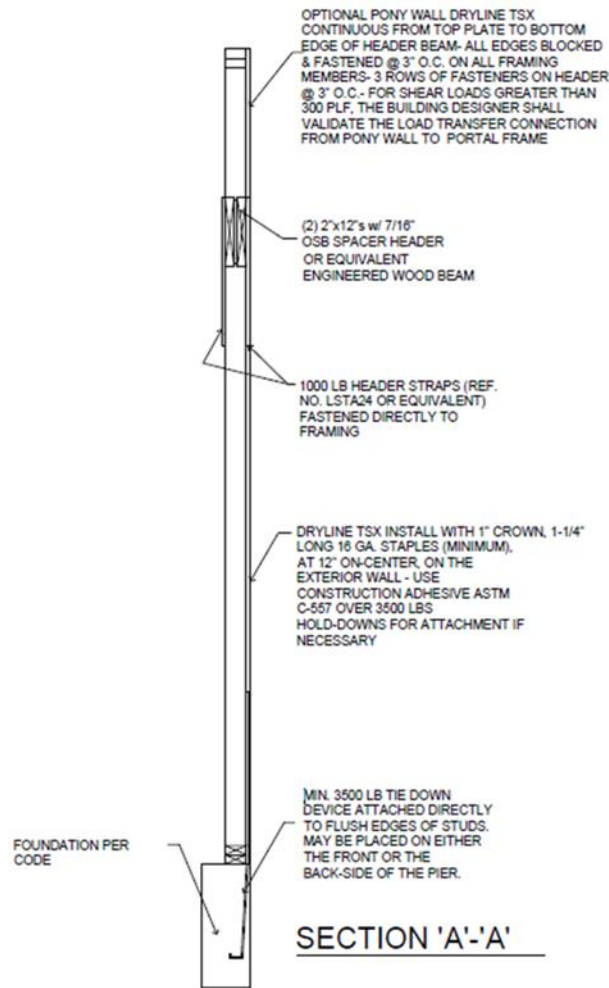
6.2.4.6.2.1 The DRYline TSX (Black) Structural Sheathing Option 2 12" PFH and 24" PFH is constructed in accordance with **Figure 7** through **Figure 9**.



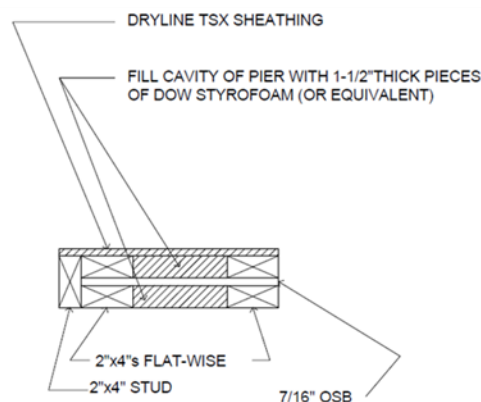
#### PLATE AND STRAP NAILING SCHEDULE



**Figure 7. Construction Details of DRYline TSX (Black) 12" to 24" PFH – Option 2**



**Figure 8. PFH Option 2 Section A-A**



**SECTION 'B'-'B'**  
**OPTIONAL INSULATION**  
**OF JOIST CAVITIES**

**Figure 9. PFH Option 2 Section B-B**



## 6.2.5 Alternative Prescriptive IRC Bracing Applications:

6.2.5.1 As an alternative to **Section 6.2.2**, the following provisions are permitted:

- 6.2.5.1.1 DRYline TSX (Black) Structural Sheathing may be used on braced wall lines as an equivalent alternative to Method WSP of the IRC, when installed in accordance with [IRC Section R602.10](#) and this report.
- 6.2.5.1.2 DRYline TSX (Black) Structural Sheathing may be used to brace walls of buildings as an alternative to the Continuous Wall Bracing provisions of [IRC Section R602.10.4](#).
- 6.2.5.1.3 Required braced wall panel lengths for DRYline TSX (Black) Structural Sheathing shall be as determined by the equivalency factor shown in **Table 4** and [IRC Table R602.10.3\(1\)](#) and [IRC Table R602.10.3\(3\)](#), including all footnotes.
  - 6.2.5.1.3.1 Bracing lengths in these tables for Method WSP or CS-WSP shall be multiplied by the equivalency factor listed in **Table 4**.

**Table 4.** DRYline TSX (Black) Structural Sheathing Braced Wall Line Length Equivalency Factors  
Based on Equivalency Testing for Use with the IRC<sup>1,2,3,4</sup>

Structural Sheathing	Maximum Stud Spacing (in)	Fastener	Fastener Spacing (in) (edge:field)	Wind
				SPF Framing
				Equivalency Factors to IRC WSP or CS-WSP
DRYline TSX (Black) Structural Sheathing	16 o.c.	<sup>15</sup> / <sub>16</sub> " Crown x 1 <sup>1</sup> / <sub>4</sub> " Leg Galvanized Staples or 0.120" x 1 <sup>1</sup> / <sub>4</sub> " Galvanized Roofing Nail	3:3	0.83

SI: 1 in = 25.4 mm

- Fastener heads shall be installed flush to the surface of the sheathing. Staples shall be a minimum 16-gauge.
- Multiply the bracing lengths in [IRC Table R602.10.3\(1\)](#) and [IRC Table R602.10.3\(3\)](#) Method WSP or CS-WSP (continuous sheathing) as applicable, including all footnotes, by the factors shown here to establish the required bracing length.
- Where gypsum wallboard is not applied to the interior side of the wall assembly, bracing lengths shall be multiplied by a factor of 1.7.
- Valid for single top plate (advanced framing method) wall installations or double top plate wall installations.

6.2.5.1.3.2 These braced wall line length equivalency factors are based on equivalency testing and are used to comply with Method WSP and CS-WSP of the IRC.

6.2.5.1.3.3 DRYline TSX (Black) Structural Sheathing tested equivalency factors in **Table 4** allow the user to determine the length of bracing required, by multiplying the factor from **Table 4** by the length shown in the WSP or CS columns in [IRC Table R602.10.3\(1\)](#), as modified by all applicable factors in [IRC Table R602.10.3\(2\)](#).

6.2.5.1.4 IRC prescriptive bracing minimums, spacing requirements, and rules must also be met.

## 6.2.6 Prescriptive IBC Conventional Light-Frame Wood Construction:

- 6.2.6.1 DRYline TSX (Black) Structural Sheathing may be used to brace exterior walls of buildings as an equivalent alternative to Method WSP of the IBC when installed with 1/2" (13 mm) gypsum fastened with a minimum 5d cooler nail or #6 Type W or S screw spaced a maximum of 8" o.c. (203 mm) at panel edges and 8" o.c. in the field. Bracing shall be in accordance with the conventional light-frame construction method of [IBC Section 2308.6](#) and this report.





## 6.2.7 Performance-Based Wood-Frame Construction:

- 6.2.7.1 DRYline TSX (Black) Structural Sheathing panels used in wall assemblies designed as shear walls are permitted to be designed in accordance with the methodology used in SDPWS for WSP using the capacities shown in **Table 5** through **Table 7**.
- 6.2.7.2 DRYline TSX (Black) Structural Sheathing panel shear walls are permitted to resist horizontal wind load forces using the allowable shear loads (in pounds per linear foot) set forth in **Table 5**.
- 6.2.7.3 DRYline TSX (Black) Structural Sheathing shear walls that require seismic design in accordance with IBC Section 1613, shall use the seismic allowable unit shear capacities set forth in **Table 6**.
- 6.2.7.3.1 The response modification coefficient,  $R$ , system overstrength factor,  $\Omega_0$ , and deflection amplification factor,  $C_d$ , indicated in **Table 6** shall be used to determine the base shear, element design forces, and design story drift in accordance with ASCE/SEI 7 Chapter 12 and Section 14.5.
- 6.2.7.4 DRYline TSX (Black) Structural Sheathing panels are permitted to resist transverse wind load forces using the allowable transverse loads (in pounds per linear foot) set forth in **Table 7** and the wind speeds shown in **Table 8**.

**Table 5.** Allowable Unit Shear Design Values for DRYline TSX (Black) Structural Sheathing - Wind

Structural Sheathing	Fastener <sup>1</sup>	Joint Treatment <sup>3</sup>	Maximum Stud Spacing (in)	Gypsum Wallboard <sup>2</sup> (GWB)	Gypsum Wallboard Fastener Spacing <sup>4</sup> (edge/field) (in)	Allowable Unit Shear Capacity (plf)
DRYline TSX (Black) Structural Sheathing	$\frac{15}{16}$ " Crown x $1\frac{1}{4}$ " Leg Galvanized Staples or 0.120" x $1\frac{1}{4}$ " Galvanized Roofing Nail	Butted or Lapped	16 o.c.	$\frac{1}{2}$ " GWB	4/16	515
					8/8	435
					8/16	415
					16/16	370
	1" Crown x $1\frac{1}{4}$ " Leg 16-Gauge Staple	Butted Lapped	24 o.c.	No GWB	-	325
				No GWB	-	260 280

SI: 1 in = 25.4 mm, 1 lb/ft = 0.0146 kN/m

1. DRYline TSX (Black) Structural Sheathing attached with a minimum 16-gauge,  $\frac{15}{16}$ " crown x  $1\frac{1}{4}$ " crown staples or 0.120" x  $1\frac{1}{4}$ " roofing nail, unless noted otherwise above. In all cases, fasteners are to be spaced a maximum of 3" o.c. at the edges and 3" o.c. in the field with a minimum edge distance of  $\frac{3}{8}$ ".
2. Gypsum attached with minimum 5d cooler nail or #6 type W or S screws  $1\frac{1}{4}$ " long. Fastener spacing shall be as required above.
3. DRYline TSX (Black) Structural Sheathing joints shall be butted at framing members and a single row of fasteners must be applied to each panel edge into the stud below. Alternately, joints may be lapped  $\frac{3}{4}$ " with a single row of fasteners along each framing member.
4. Linear interpolation between fastening patterns is permitted.



**Table 6.** Seismic Performance of DRYline TSX (Black) Structural Sheathing<sup>1</sup>

Seismic Force-Resisting System	Maximum Stud Spacing (in)	GWB <sup>7</sup>	Seismic Allowable Unit Shear Capacity <sup>2</sup> (plf)	Apparent Shear Stiffness, $G_a$ (kips/in)	Response Modification Factor, <sup>3</sup> $R$	System Overstrength Factor, <sup>4</sup> $\Omega_0$	Deflection Amplification Coefficient, <sup>5</sup> $C_d$	Structural System Limitations and Building Height Limit <sup>6</sup> (ft)				
								Seismic Design Category				
								B	C	D	E	F
Light-Frame (Wood) Walls Sheathed with DRYline TSX (Black) Structural Sheathing	16 o.c.	1/2" GWB	345	11.0	6.5	3	4	NL	NL	65	65	65
		No GWB	260	7.5	6.5	3	4	NL	NL	65	65	65

SI: 1 in = 25.4 mm, 1 lb/ft = 0.0146 kN/m

- All seismic design coefficients follow the equivalency procedures as defined in **Section 8** of this report.
- Allowable Unit shear capacity is based on a safety factor of 2.5 in accordance with ASCE/SEI 7 Chapter 12.
- Response modification coefficient,  $R$ , for use throughout ASCE/SEI 7. Note  $R$  reduces forces to a strength level, not an allowable stress level.
- The tabulated value of the overstrength factor,  $\Omega_0$ , is permitted to be reduced by subtracting one-half (0.5) for structures with flexible diaphragms.
- Deflection amplification factor,  $C_d$ , for use with ASCE/SEI 7 Sections 12.8.6, 12.8.7 and 12.9.2.
- NL = Not Limited. Heights are measured from the base of the structure as defined in ASCE/SEI 7 Section 11.2.
- Gypsum attached with minimum #6 type W or S screws 1 1/4" long spaced 8" o.c. at panel edges and in the field. Maximum stud spacing is 16" o.c.

**Table 7.** Load Capacities (PSF) for DRYline TSX (Black) Structural Sheathing Resisting Out-of-Plane Wind Loads<sup>1</sup>

Structural Sheathing	Allowable Design Value (psf)	Maximum Stud Spacing (in)	Fastener Schedule
DRYline TSX (Black) Structural Sheathing	120	16 o.c.	15/16" crown, 1 1/4" leg 16-gauge galvanized

SI: 1 in = 25.4 mm, 1 psf = 0.0479 kN/m<sup>2</sup>

- Design wind load shall be in accordance with [IBC Section 1609.1.1](#).

**Table 8.** Basic Wind Speed (MPH) for DRYline TSX (Black) Structural Sheathing Used in Exterior Wall Covering Assemblies<sup>1</sup>

Structural Sheathing	Allowable Components & Cladding Basic Wind Speed $V_{asd}$ per ASCE/SEI 7-05 (mph)	Allowable Components & Cladding Basic Wind Speed $V_{ult}$ per ASCE/SEI 7-22 (mph)
	16" o.c. Framing	16" o.c. Framing
DRYline TSX (Black) Structural Sheathing	155	200

SI: 1 in = 25.4 mm, 1 lb = 4.45 N, 1 lb/ft = 0.0146 kN/m, 1 psf = 0.0479 kN/m<sup>2</sup>, 1 psi = 0.00689 MPa, 1 mph = 1.61 km/h

- Allowable wind speeds are based on the following: Mean roof height 30', Exposure B, 10 sq. ft. effective wind area. See the applicable building code for any adjustment need for specific building location and configuration.



### 6.3 Water-Resistive Barrier (WRB)

- 6.3.1 DRYline TSX (Black) Structural Sheathing may be used as a WRB as prescribed in [IBC Section 1403.2<sup>23</sup>](#) and [IRC Section R703.2](#) when installed on exterior walls as described in this section.
- 6.3.2 DRYline TSX (Black) Structural Sheathing shall be installed in the vertical or horizontal orientation with board joints placed directly over exterior framing (i.e., studs, plates, or blocking) spaced a maximum of 16" (406 mm) o.c. The fasteners used to attach the board shall be installed in accordance with **Section 9**.
- 6.3.3 All seams and joints between boards shall be overlapped  $\frac{3}{4}$ " (19 mm) or covered by minimum 1.5" (38 mm) wide DRYline® Sheathing Tape or equivalent.
- 6.3.4 Flashing must be installed at all sheathing penetrations and shall comply with all applicable code sections.
- 6.3.5 Where DRYline TSX (Black) Structural Sheathing is used intermittently along a braced wall line, Thermo Sheath (Green) Structural Sheathing may be used as infill between the DRYline TSX (Black) Structural Sheathing panels. In this application, the WRB is maintained, provided all seams and joints between boards are overlapped  $\frac{3}{4}$ " (19 mm) or covered by an approved construction tape.
- 6.3.6 DRYline TSX (Black) Structural Sheathing has water-resistance properties as shown in **Table 9**.

**Table 9.** DRYline TSX (Black) Structural Sheathing Water-Resistance Properties (g/s\*m<sup>2</sup> Pa)

Property	Test Method	Value
Water Vapor Transmission	ASTM E96	< 0.3 Perm

### 6.4 Air Barrier

- 6.4.1 DRYline TSX (Black) Structural Sheathing is qualified as an air barrier material as prescribed in [IRC Section N1102.4.1.1](#) and [IECC Section R402.4.1.1](#), [IECC Section C402.5.1](#), and [IECC Section C402.5.1.3](#) in accordance with ASTM E2178.
- 6.4.2 When used as part of a continuous air barrier assembly, DRYline TSX (Black) Structural Sheathing shall be installed in accordance with **Section 9**. When installed as part of a continuous air barrier assembly in a non-structural application, the fasteners used to attach the board may be installed in accordance with **Section 6.5**.
  - 6.4.2.1 Additionally, all sheathing panel edges at the top and bottom of the wall assemblies and all joints between sheathing panels shall be sealed in accordance with [IRC Section N1102.4.1.1](#), [IECC Section R402.4.1.1](#), and [IECC Section C402.5.1](#).
- 6.4.3 DRYline TSX (Black) Structural Sheathing has the air permeability as shown in **Table 10**.

**Table 10.** Air Barrier Material Properties

Product	Air Permeability (L/s*m <sup>2</sup> )
DRYline TSX (Black) Structural Sheathing <sup>1</sup>	< 0.02
1. Tested in accordance with ASTM E2178.	



## 6.5 Non-Structural Applications

- 6.5.1 Where other means of wall bracing are provided or are not required, and an approved exterior wall covering capable of separately resisting loads perpendicular to the face of the walls is installed over the sheathing, DRYline TSX (Black) Structural Sheathing may be used.
- 6.5.2 The sheathing panels are applied to wall framing with minimum 0.120" x 1 1/4" (3 mm x 32 mm) galvanized roofing nails or 16-gauge galvanized staples having a 15/16" (11 mm) crown and 1 1/4" (32 mm) leg lengths.
- 6.5.3 Fastener spacing shall be a maximum of 6" (152 mm) at the edges and 12" (305 mm) on intermediate members.
  - 6.5.3.1 Stud spacing shall be a maximum of 24" (610 mm) o.c.
  - 6.5.3.2 Minimum fastener penetration into the framing members is 3/4" (19 mm).
- 6.6 Where the application falls outside of the performance evaluation, conditions of use and/or installation requirements set forth herein, alternative techniques shall be permitted in accordance with accepted engineering practice and experience. This includes but is not limited to the following areas of engineering: mechanics or materials, structural, building science and fire science.

## 7 Certified Performance<sup>24</sup>

- 7.1 All construction methods shall conform to accepted engineering practices to ensure durable, livable, and safe construction and shall demonstrate acceptable workmanship reflecting journeyman quality of work of the various trades.<sup>25</sup>
- 7.2 The strength and rigidity of the component parts and/or the integrated structure shall be determined by engineering analysis or by suitable load tests to simulate the actual loads and conditions of application that occur.<sup>26</sup>

## 8 Regulatory Evaluation and Accepted Engineering Practice

- 8.1 DRYline TSX (Black) Structural Sheathing complies with the following legislatively adopted regulations and/or accepted engineering practice for the following reasons:
  - 8.1.1 Structural performance under lateral load conditions (wind and seismic) for use as an alternative to the IRC Intermittent Wall Bracing provisions of [IRC Section R602.10](#) Method WSP.
  - 8.1.2 Structural performance under lateral load conditions for use as an alternative to the IRC Continuous Wall Bracing provisions of [IRC Section R602.10.4](#) Methods CS-WSP and CS-PF.
  - 8.1.3 Structural performance under lateral load conditions for use as an alternative to the IRC Continuous Wall Bracing provisions of [IRC Section R602.10.6.2](#) Method PFH.
  - 8.1.4 Structural performance under lateral load conditions for use as an alternative to the IBC Conventional Wall Bracing provisions of [IBC Section 2308.6](#) Method WSP for Type V construction.
  - 8.1.5 Structural performance under lateral load conditions for both wind and seismic loading for use with the IBC performance-based provisions of [IBC Section 2306.1](#) and [IBC Section 2306.3](#) for light-frame wood wall assemblies.
    - 8.1.5.1 The basis of the seismic evaluation performed as part of this report is based on ASTM D7989 and testing per ASTM E2126 to establish Seismic Design Coefficients (SDC) that conform to the requirements of ASCE 7 Section 12.2.1.1.
    - 8.1.5.2 **Table 6** provides SDC that conform to the requirements in ASCE/SEI 7 Section 12.2.1 and Table 12.2-1 for design of wall assemblies in buildings that require seismic design in accordance with ASCE/SEI 7 (i.e., all seismic design categories).



8.1.5.3 The basis for equivalency testing is outlined in Section 12.2.1.1 of ASCE/SEI 7:

Use of seismic force-resisting systems not contained in Table 12.2-1 shall be permitted contingent on submittal to and approval by the Authority Having Jurisdiction and independent structural design review of an accompanying set of design criteria and substantiating analytical and test data. The design criteria shall specify any limitations on system use, including Seismic Design Category and height; required procedures for designing the system's components and connections; required detailing; and the values of the response modification coefficient,  $R$ ; overstrength factor  $\Omega_0$ ; and deflection amplification factor,  $C_d$ .

8.1.5.4 The SDC evaluation uses the approach found in documentation entitled *“Establishing Seismic Equivalency for Proprietary Prefabricated Shear Panels”* using code-defined accepted engineering procedures, experience, and technical judgment.

- 8.1.6 Structural performance under lateral load conditions for use as an alternative to SDPWS Section 4.3 Wood Frame Shear Walls.
- 8.1.7 Resistance to transverse loads for wall assemblies used in light-frame wood construction in accordance with [IBC Section 1609.1.1](#) and [IRC Section R301.2.1](#).
- 8.1.8 Performance for use as a WRB in accordance with [IBC Section 1403.2<sup>27</sup>](#) and [IRC Section R703.2](#).
- 8.1.9 Performance for use as an air barrier material in accordance with [IRC Section N1102.4.1.1](#), [IECC Section R402.4.1.1](#), and [IECC Section C402.5.1.1](#).
- 8.2 Use of DRYline TSX (Black) Structural Sheathing in draftstop applications is outside the scope of this evaluation. For this application, see Report Number [1407-10](#).
- 8.3 Use of DRYline TSX (Black) Structural Sheathing to resist uplift loads is outside the scope of this report.
- 8.4 Any building code, regulation and/or accepted engineering evaluations (i.e., research reports, [duly authenticated reports](#), etc.) that are conducted for this Listing were performed by DrJ Engineering, LLC (DrJ), an [ISO/IEC 17065 accredited certification body](#) and a professional engineering company operated by [RDP/approved sources](#). DrJ is qualified<sup>28</sup> to practice product and regulatory compliance services within its scope of accreditation and engineering expertise, respectively.
- 8.5 Engineering evaluations are conducted with DrJ's ANAB [accredited ICS code scope](#) of expertise, which are also its areas of professional engineering competence.
- 8.6 Any regulation specific issues not addressed in this section are outside the scope of this report.

## 9 Installation

- 9.1 Installation shall comply with the approved construction documents, the manufacturer installation instructions, this report and the applicable building code.
- 9.2 In the event of a conflict between the manufacturer installation instructions and this report, the more restrictive shall govern.
- 9.3 *Installation Procedure*
  - 9.3.1 *General:*
    - 9.3.1.1 DRYline TSX (Black) Structural Sheathing shall be installed in accordance with the manufacturer published installation instructions and this report (see **Figure 10**). If there are any conflicts between the manufacturer instructions and this report, the more restrictive shall govern.
    - 9.3.1.2 Where required, gypsum wallboard shall be a minimum 1/2" (13 mm) thickness.



### 9.3.2 Orientation:

- 9.3.2.1 DRYline TSX (Black) Structural Sheathing must be installed vertically or horizontally with all panel edges supported by framing or blocking.
- 9.3.2.2 DRYline TSX (Black) Structural Sheathing must be installed over studs, with framing that has a nominal thickness of not less than 2" (51 mm) and spaced a maximum of 16" (406 mm) o.c.

### 9.3.3 Fastener Type:

#### 9.3.3.1 DRYline TSX (Black) Structural Sheathing:

- 9.3.3.1.1 Minimum  $15/16$ " crown x  $1\frac{1}{4}$ " leg, 16-gauge galvanized staples installed with the underside of the crown flush with the surface of the sheathing
- 9.3.3.1.2 Minimum 0.120" x  $1\frac{1}{4}$ " (3 mm x 32 mm) galvanized roofing nail installed with the underside of the head flush with the surface of the sheathing.

#### 9.3.3.2 Gypsum Wallboard:

- 9.3.3.2.1 Where required, gypsum wallboard shall be installed with a minimum:

- 9.3.3.2.1.1 #6 x  $1\frac{1}{4}$ " (32 mm) Type W or S screws
- 9.3.3.2.1.2 5d cooler nails

### 9.3.4 Fastener Spacing:

#### 9.3.4.1 DRYline TSX (Black) Structural Sheathing:

- 9.3.4.1.1 Maximum of 3" o.c. (76 mm) along the edge and 3" o.c. in the field.

#### 9.3.4.2 Gypsum Wallboard:

- 9.3.4.2.1 For IRC and IBC prescriptive applications, gypsum fasteners shall be spaced 8" o.c (203 mm) at panel edges and 8" o.c. at intermediated framing. For engineered design, see **Table 5**.

### 9.3.5 Fastener Edge Distance:

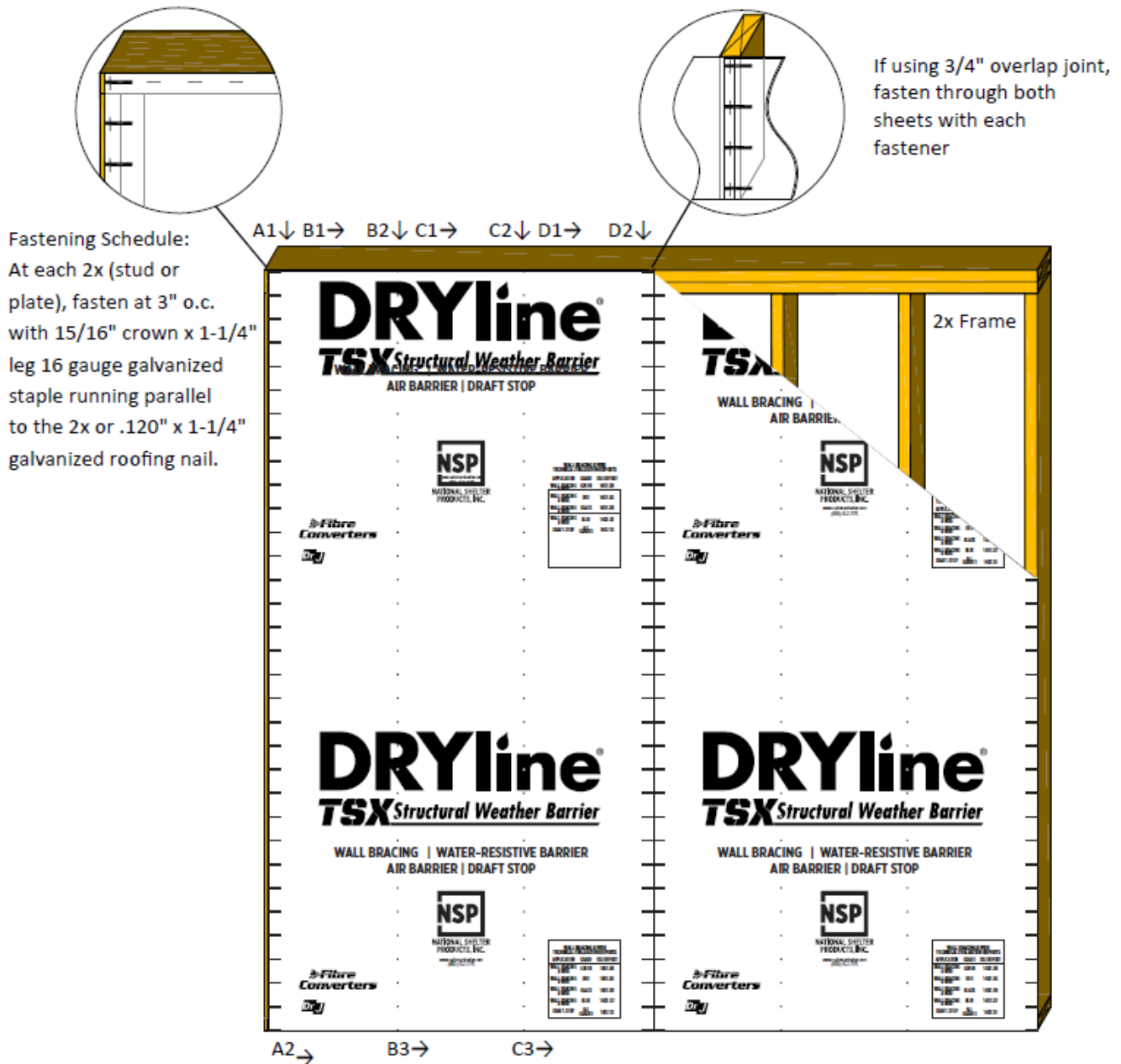
- 9.3.5.1 Fastener edge distance is a minimum of  $\frac{3}{8}$ " (10 mm) for both DRYline TSX (Black) Structural Sheathing and gypsum.
- 9.3.5.2 Always fasten staples parallel to the framing member.

### 9.3.6 Treatment of Joints:

- 9.3.6.1 DRYline TSX (Black) Structural Sheathing joints shall be butted at framing members and a single row of fasteners must be applied to each panel edge into the stud below.
- 9.3.6.2 Alternately, joints may be lapped  $\frac{3}{4}$ " (19 mm) with a single row of fasteners along each framing member.
- 9.3.6.3 Do not tack DRYline TSX (Black) Structural Sheathing to framing, but fasten each panel completely once fastening begins.

### 9.3.7 Window Treatments:

- 9.3.7.1 If windows are made to accommodate traditional  $\frac{1}{2}$ " (19 mm) sheathing materials, order windows with adjustable nailing fins from the supplier. Door brick moldings may be planed or routed  $\frac{3}{8}$ " (10 mm) in order to accommodate the different sheathing thickness, either at the jobsite or by the millwork supplier.
- 9.3.7.2 DRYline TSX (Black) Structural Sheathing must be installed with appropriate flashing and counter flashing in conformance with accepted building standards and in compliance with local building codes and the flashing manufacturer installation instructions.



#### Fastening Schedule:

Step A – (A1) starting in the top left corner, fasten down the left side of the sheet and then (A2) across the bottom stopping at the next vertical 2x.

Step B – (B1) starting in the top left corner, fasten across the top of the sheet stopping at the next vertical 2x, then (B2) down that 2x starting at the top, and then (B3) across the bottom stopping at the next vertical 2x.

Step C – Repeat step B.

Step D – (D1) starting at the previous vertical 2x, fasten across the top of the sheet stopping at the next vertical 2x. If the last sheet or a butt joint, (D2) fasten starting at the top of the last 2x. If installing another sheet with an overlapping joint, overlap the next sheet and repeat starting with Step A, fastening through both sheets with each fastener.

**Figure 10. Installation Instructions**





## 10 Substantiating Data

- 10.1 Testing has been performed under the supervision of a professional engineer and/or under the requirements of ISO/IEC 17025 as follows:
- 10.1.1 Lateral load testing in accordance with ASTM E2126 and analysis per ASTM D7989
  - 10.1.2 Transverse load testing in accordance with ASTM E330
  - 10.1.3 Water-resistive barrier testing in accordance with ASTM E331
  - 10.1.4 Water vapor transmission testing in accordance with ASTM E96
  - 10.1.5 Air barrier material testing in accordance with ASTM E2178
- 10.2 Information contained herein may include the result of testing and/or data analysis by sources that are approved agencies, approved sources and/or RDPs. Accuracy of external test data and resulting analysis is relied upon.
- 10.3 Where applicable, testing and/or engineering analysis are based upon provisions that have been codified into law through state or local adoption of regulations and standards. The developers of these regulations and standards are responsible for the reliability of published content. DrJ's engineering practice may use a regulation-adopted provision as the control. A regulation-endorsed control versus a simulation of the conditions of application to occur establishes a new material as being equivalent to the regulatory provision in terms of quality, strength, effectiveness, fire resistance, durability and safety.
- 10.4 The accuracy of the provisions provided herein may be reliant upon the published properties of raw materials, which are defined by the grade mark, grade stamp, mill certificate or duly authenticated reports from approved agencies and/or approved sources provided by the supplier. These are presumed to be minimum properties and relied upon to be accurate. The reliability of DrJ's engineering practice, as contained in this duly authenticated report, may be dependent upon published design properties by others.
- 10.5 Testing and engineering analysis: The strength, rigidity, and/or general performance of component parts and/or the integrated structure are determined by suitable tests that simulate the actual conditions of application that occur and/or by accepted engineering practice and experience.<sup>29</sup>
- 10.6 Where additional condition of use and/or regulatory compliance information is required, please search for DRYline TSX (Black) Structural Sheathing on the DrJ Certification website.

## 11 Findings

- 11.1 As outlined in **Section 6**, DRYline TSX (Black) Structural Sheathing has performance characteristics that were tested and/or meet applicable regulations and is suitable for use pursuant to its specified purpose.
- 11.2 When used and installed in accordance with this duly authenticated report and the manufacturer installation instructions, DRYline TSX (Black) Structural Sheathing shall be approved for the following applications:
- 11.2.1 Lateral load resistance due to wind and seismic loads carried by shear walls.
  - 11.2.2 Use as an equivalent alternative to the CS-PF as described in IRC Section R602.10.5 and IRC Section R602.10.6.4.
  - 11.2.3 Use as an equivalent alternative to Method PFH as described in IRC Section R602.10.6.2.
  - 11.2.4 Transverse load resistance due to components and cladding pressures on building surfaces.
  - 11.2.5 Performance for use as a WRB in accordance with IBC Section 1403.2<sup>30</sup> and IRC Section R703.2.
  - 11.2.6 Performance for use as an air barrier material in accordance with IRC Section N1102.4.1.1, IECC Section R402.4.1.1, IECC Section C402.5.1, and IECC Section C402.5.1.3.<sup>31</sup>



- 11.3 Unless exempt by state statute, when DRYline TSX (Black) Structural Sheathing is to be used as a structural and/or building envelope component in the design of a specific building, the design shall be performed by an RDP.
- 11.4 Any application specific issues not addressed herein can be engineered by an RDP. Assistance with engineering is available from National Shelter Products, Inc..
- 11.5 IBC Section 104.11 (IRC Section R104.11 and IFC Section 104.10<sup>32</sup> are similar) in pertinent part states:

**104.11 Alternative materials, design and methods of construction and equipment.** The provisions of this code are not intended to prevent the installation of any material or to prohibit any design or method of construction not specifically prescribed by this code. Where the alternative material, design or method of construction is not approved, the building official shall respond in writing, stating the reasons the alternative was not approved.

- 11.6 **Approved:**<sup>33</sup> Building regulations require that the building official shall accept duly authenticated reports.<sup>34</sup>
- 11.6.1 An approved agency is “*approved*” when it is ANAB ISO/IEC 17065 accredited.
- 11.6.2 An approved source is “*approved*” when an RDP is properly licensed to transact engineering commerce.
- 11.6.3 Federal law, Title 18 US Code Section 242, requires that where the alternative product, material, service, design, assembly and/or method of construction is not approved, the building official shall respond in writing, stating the reasons why the alternative was not approved. Denial without written reason deprives a protected right to free and fair competition in the marketplace.
- 11.7 DrJ is a licensed engineering company, employs licensed RDPs and is an ANAB-Accredited Product Certification Body – Accreditation #1131.
- 11.8 Through the IAF Multilateral Agreements (MLA), this duly authenticated report can be used to obtain product approval in any jurisdiction or country because all ANAB ISO/IEC 17065 duly authenticated reports are equivalent.<sup>35</sup>

## 12 Conditions of Use

- 12.1 Material properties shall not fall outside the boundaries defined in **Section 6**.
- 12.2 As defined in **Section 6**, where material and/or engineering mechanics properties are created for load resisting design purposes, the resistance to the applied load shall not exceed the ability of the defined properties to resist those loads using the principles of accepted engineering practice.
- 12.3 As listed herein, DRYline TSX (Black) Structural Sheathing shall not be used:
- 12.3.1 As a nailing base, nor
- 12.3.2 To resist horizontal loads from concrete and masonry walls.
- 12.4 When DRYline TSX (Black) Structural Sheathing is not installed for use as wall bracing, as described in this report, the walls shall be braced by other materials in accordance with the applicable code.
- 12.5 When used as a WRB, DRYline TSX (Black) Structural Sheathing seams shall be overlapped  $\frac{3}{4}$ " (19 mm) or covered with minimum 1.5" (38 mm) wide DRYline Sheathing Tape or equivalent.
- 12.6 When used as part of a continuous air barrier assembly, all sheathing panel edges at the top and bottom of the wall assemblies, and all joints between sheathing panels, shall be sealed.
- 12.7 When used in accordance with the IBC in Seismic Design Categories C, D, E, or F, special inspections shall comply with IBC Section 1705.13.<sup>36</sup>



- 12.8 When used in accordance with the IBC in high wind areas, special inspections shall comply with IBC Section 1705.12.<sup>37</sup>
- 12.9 Loads applied shall not exceed those recommended by the manufacturer as follows:
- 12.9.1 Allowable shear loads do not exceed values in **Table 5** for wind loads and **Table 6** for seismic loads.
  - 12.9.2 Transverse design loads shall not exceed those described in **Table 7**, unless an approved exterior wall covering capable of separately resisting loads perpendicular to the face of the walls is installed over the sheathing.
- 12.10 All panel edges shall be supported by wall framing or solid blocking a minimum of 2" (51 mm) nominal in thickness.
- 12.11 DRYline TSX (Black) Structural Sheathing is manufactured in Constantine, Michigan, under a quality control program with quality control inspections in accordance with IBC Section 110.3.10,<sup>38</sup> IBC Section 110.4 and IRC Section R109.2.
- 12.12 When required by adopted legislation and enforced by the building official, also known as the authority having jurisdiction (AHJ) in which the project is to be constructed:
- 12.12.1 Any calculations incorporated into the construction documents shall conform to accepted engineering practice and, when prepared by an approved source, shall be approved when signed and sealed.
  - 12.12.2 This report and the installation instructions shall be submitted at the time of permit application.
  - 12.12.3 This innovative product has an internal quality control program and a third-party quality assurance program.
  - 12.12.4 At a minimum, this innovative product shall be installed per **Section 9** of this report.
  - 12.12.5 The review of this report by the AHJ shall comply with IBC Section 104 and IBC Section 105.4.
  - 12.12.6 This innovative product has an internal quality control program and a third party quality assurance program in accordance with IBC Section 104.4, IBC Section 110.4, IBC Section 1703, IRC Section R104.4 and IRC Section R109.2.
  - 12.12.7 The application of this innovative product in the context of this report is dependent upon the accuracy of the construction documents, implementation of installation instructions, inspection as required by IBC Section 110.3, IRC Section R109.2 and any other regulatory requirements that may apply.
- 12.13 The approval of this report by the AHJ shall comply with IBC Section 1707.1, where legislation states in part, *"the building official shall accept duly authenticated reports from approved agencies in respect to the quality and manner of use of new material or assemblies as provided for in Section 104.11,"* all of IBC Section 104, and IBC Section 105.4.
- 12.14 Design loads shall be determined in accordance with the regulations adopted by the jurisdiction in which the project is to be constructed and/or by the building designer (i.e., owner or RDP).
- 12.15 The actual design, suitability, and use of this report for any particular building, is the responsibility of the owner or the authorized agent of the owner.



### 13 Identification

- 13.1 The innovative product listed in **Section 1.1** is identified by a label on the board or packaging material bearing the manufacturer name, product name, this report number and other information to confirm code compliance.
- 13.2 Additional technical information can be found at [www.nationalshelter.com](http://www.nationalshelter.com).

### 14 Review Schedule

- 14.1 This report is subject to periodic review and revision. For the latest version, visit [drjcertification.org](http://drjcertification.org).
- 14.2 For information on the status of this report, please contact [DrJ Certification](#).

### 15 Approved for Use Pursuant to U.S. and International Legislation Defined in Appendix A

- 15.1 DRYline TSX (Black) Structural Sheathing is included in this report published by an approved agency that is concerned with evaluation of products or services, maintains periodic inspection of the production of listed materials or periodic evaluation of services. This report states either that the material, product or service meets recognized standards or has been tested and found suitable for a specified purpose. This report meets the legislative intent and definition of being acceptable to the AHJ.



## Appendix A

### 1 Legislation that Authorizes AHJ Approval

- 1.1 **Fair Competition:** State legislatures have adopted Federal regulations for the examination and approval of building code referenced and alternative products, materials, designs, services, assemblies and/or methods of construction that:
  - 1.1.1 Advance innovation
  - 1.1.2 Promote competition so all businesses have the opportunity to compete on price and quality in an open market on a level playing field unhampered by anticompetitive constraints
  - 1.1.3 Benefit consumers through lower prices, better quality, and greater choice
- 1.2 **Adopted Legislation:** The following local, state and federal regulations affirmatively authorize this innovative product to be approved by AHJs, delegates of building departments and/or delegates of an agency of the federal government:
  - 1.2.1 Interstate commerce is governed by the Federal Department of Justice to encourage the use of innovative products, materials, designs, services, assemblies, and/or methods of construction. The goal is to “*protect economic freedom and opportunity by promoting free and fair competition in the marketplace.*”
  - 1.2.2 Title 18 US Code Section 242 affirms and regulates the right of individuals and businesses to freely and fairly have new products, materials, designs, services, assemblies and/or methods of construction approved for use in commerce. Disapproval of alternatives shall be based upon non-conformance with respect to specific provisions of adopted legislation and shall be provided in writing stating the reasons why the alternative was not approved, with reference to the specific legislation violated.
  - 1.2.3 The federal government and each state have a public records act. In addition, each state also has legislation that mimics the federal Defend Trade Secrets Act 2016 (DTSA),<sup>39</sup> where providing test reports, engineering analysis and/or other related IP/TS is subject to prison of not more than ten years<sup>40</sup> and/or a \$5,000,000 fine or 3 times the value of<sup>41</sup> the Intellectual Property (IP) and Trade Secrets (TS).
    - 1.2.3.1 Compliance with public records and trade secret legislation requires approval through the use of Listings, certified reports, Technical Evaluation Reports, duly authenticated reports and/or research reports prepared by approved agencies and/or approved sources.
  - 1.2.4 For new materials<sup>42</sup> that are not specifically provided for in any regulation, the design strengths and permissible stresses shall be established by tests, where suitable load tests simulate the actual loads and conditions of application that occur.
  - 1.2.5 The design strengths and permissible stresses of any structural material shall conform to the specifications and methods of design using accepted engineering practice.<sup>43</sup>
  - 1.2.6 The commerce of approved sources (i.e., registered PEs) is regulated by professional engineering legislation. Professional engineering commerce shall always be approved by AHJs, except where there is evidence provided in writing, that specific legislation have been violated by an individual registered PE.
  - 1.2.7 The AHJ shall accept duly authenticated reports from approved agencies in respect to the quality and manner of use of new materials or assemblies as provided for in IBC Section 104.11.<sup>44</sup>



- 1.3 **Approved<sup>45</sup> by Los Angeles:** The Los Angeles Municipal Code (LAMC) states in pertinent part that the provisions of LAMC are not intended to prevent the use of any material, device or method of construction not specifically prescribed by LAMC. The Department shall use Part III, Recognized Standards in addition to Part II, Uniform Building Code Standards of Division 35, Article 1, Chapter IX of the LAMC in evaluation of products for approval where such standard exists for the product or the material and may use other approved standards that apply. Whenever tests or certificates of any material or fabricated assembly are required by Chapter IX of the LAMC, such tests or certification shall be made by a testing agency approved by the Superintendent of Building to conduct such tests or provide such certifications. The testing agency shall publish the scope and limitation(s) of the listed material or fabricated assembly.<sup>46</sup> The Superintendent of Building Approved Testing Agency Roster is provided by the Los Angeles Department of Building and Safety (LADBS). The Center for Building Innovation (CBI) Certificate of Approval License is TA24945. Tests and certifications found in a DrJ Listing are LAMC approved. In addition, the Superintendent of Building shall accept duly authenticated reports from approved agencies in respect to the quality and manner of use of new materials or assemblies as provided for in the California Building Code (CBC) Section 1707.1.<sup>47</sup>
- 1.4 **Approved by Chicago:** The Municipal Code of Chicago (MCC) states in pertinent part that an Approved Agency is a Nationally Recognized Testing Laboratory (NRTL) acting within its recognized scope and/or a certification body accredited by the American National Standards Institute (ANSI) acting within its accredited scope. Construction materials and test procedures shall conform to the applicable standards listed in the MCC. Sufficient technical data shall be submitted to the building official to substantiate the proposed use of any product, material, service, design, assembly and/or method of construction not specifically provided for in the MCC. This technical data shall consist of research reports from approved sources (i.e., MCC defined Approved Agencies).
- 1.5 **Approved by New York City:** The 2022 NYC Building Code (NYCBC) states in part that an approved agency shall be deemed<sup>48</sup> an approved testing agency via ISO/IEC 17025 accreditation, an approved inspection agency via ISO/IEC 17020 accreditation, and an approved product evaluation agency via ISO/IEC 17065 accreditation. Accrediting agencies, other than federal agencies, must be members of an internationally recognized cooperation of laboratory and inspection accreditation bodies subject to a mutual recognition agreement<sup>49</sup> (i.e., ANAB, International Accreditation Forum also known as IAF, etc.).
- 1.6 **Approved by Florida:** Statewide approval of products, methods or systems of construction shall be approved, without further evaluation by:
- 1.6.1 A certification mark or listing of an approved certification agency,
  - 1.6.2 A test report from an approved testing laboratory,
  - 1.6.3 A product evaluation report based upon testing or comparative or rational analysis, or a combination thereof, from an approved product evaluation entity, or
  - 1.6.4 A product evaluation report based upon testing, comparative or rational analysis, or a combination thereof, developed, signed and sealed by a professional engineer or architect, licensed in Florida.
  - 1.6.5 For local product approval, products or systems of construction shall demonstrate compliance with the structural wind load requirements of the Florida Building Code (FBC) through one of the following methods:
    - 1.6.5.1 A certification mark, listing or label from a commission-approved certification agency indicating that the product complies with the code,
    - 1.6.5.2 A test report from a commission-approved testing laboratory indicating that the product tested complies with the code,
    - 1.6.5.3 A product-evaluation report based upon testing, comparative or rational analysis, or a combination thereof, from a commission-approved product evaluation entity which indicates that the product evaluated complies with the code,





- 1.6.5.4 A product-evaluation report or certification based upon testing or comparative or rational analysis, or a combination thereof, developed and signed and sealed by a Florida professional engineer or Florida registered architect, which indicates that the product complies with the code, or
- 1.6.5.5 A statewide product approval issued by the Florida Building Commission.
- 1.6.6 The [Florida Department of Business and Professional Regulation](#) (DBPR) website provides a listing of companies certified as a [Product Evaluation Agency](#) (i.e., EVLMiami 13692), a [Product Certification Agency](#) (i.e., CER10642), and as a [Florida Registered Engineer](#) (i.e., ANE13741).
- 1.7 **Approved by Miami-Dade County (i.e., Notice of Acceptance [NOA]):** A Florida statewide approval is an NOA. An NOA is a Florida local product approval. By Florida law, Miami-Dade County shall accept the statewide and local Florida Product Approval as provided for in Florida legislation [553.842](#) and [553.8425](#).
- 1.8 **Approved by New Jersey:** Pursuant to the 2018 Building Code of New Jersey in [IBC Section 1707.1 General](#),<sup>50</sup> it states: “*In the absence of approved rules or other approved standards, the building official shall accept duly authenticated reports from [approved agencies](#) in respect to the quality and manner of use of new materials or assemblies as provided for in the administrative provisions of the Uniform Construction Code (N.J.A.C. 5:23)*”.<sup>51</sup> Furthermore N.J.A.C 5:23-3.7 states: “*Municipal approvals of alternative materials, equipment, or methods of construction.*”
  - 1.8.1 **Approvals:** Alternative materials, equipment or methods of construction shall be approved by the appropriate subcode official provided the proposed design is satisfactory and that the materials, equipment or methods of construction are suitable for the intended use and are at least the equivalent in quality, strength, effectiveness, fire resistance, durability and safety of those conforming with the requirements of the regulations.
    - 1.8.1.1 A field evaluation label and report or letter issued by a nationally recognized testing laboratory verifying that the specific material, equipment or method of construction meets the identified standards or has been tested and found to be suitable for the intended use, shall be accepted by the appropriate subcode official as meeting the requirements of the above.
    - 1.8.1.2 Reports of engineering findings issued by nationally recognized evaluation service programs such as but not limited to, the Building Officials and Code Administrators (BOCA), the International Conference of Building Officials (ICBO), the Southern Building Code Congress International (SBCCI), the International Code Council (ICC), and the National Evaluation Service, Inc., shall be accepted by the appropriate subcode official as meeting the requirements of the above.
  - 1.8.2 The [New Jersey Department of Community Affairs](#) has confirmed that technical evaluation reports, from any accredited entity listed by [ANAB](#), meets the requirements of item the previous paragraph, given that the listed entities are no longer in existence and/or do not provide “*reports of engineering findings.*”
- 1.9 **Approved by the Code of Federal Regulations Manufactured Home Construction and Safety Standards:** Pursuant to Title 24, Subtitle B, Chapter XX, [Part 3282.14](#)<sup>52</sup> and [Part 3280](#),<sup>53</sup> the Department encourages innovation and the use of new technology in manufactured homes. The design and construction of a manufactured home shall conform to the provisions of Part 3282 and Part 3280 where key approval provisions in mandatory language follow:
  - 1.9.1 “*All construction methods shall be in conformance with accepted engineering practices.*”
  - 1.9.2 “*The strength and rigidity of the component parts and/or the integrated structure shall be determined by engineering analysis or by suitable load tests to simulate the actual loads and conditions of application that occur.*”
  - 1.9.3 “*The design stresses of all materials shall conform to accepted engineering practice.*”



- 1.10 Approval by US, Local and State Jurisdictions in General:** In all other local and state jurisdictions, the adopted building code legislation states in pertinent part that:
- 1.10.1 For new materials that are not specifically provided for in this code, the design strengths and permissible stresses shall be established by tests.<sup>54</sup>
  - 1.10.2 For innovative alternatives and/or methods of construction, the building official shall accept duly authenticated reports from approved agencies with respect to the quality and manner of use of new materials or assemblies.<sup>55</sup>
    - 1.10.2.1 An approved agency is “*approved*” when it is ANAB ISO/IEC 17065 accredited. DrJ Engineering, LLC (DrJ) is in the ANAB directory.
    - 1.10.2.2 An approved source is “*approved*” when an RDP is properly licensed to transact engineering commerce. The regulatory authority governing approved sources is the state legislature via its professional engineering regulations.<sup>56</sup>
  - 1.10.3 The design strengths and permissible stresses of any structural material...shall conform to the specifications and methods of design of accepted engineering practice performed by an approved source.<sup>57</sup>
- 1.11 Approval by International Jurisdictions:** The USMCA and GATT agreements provide for approval of innovative materials, designs, services, and/or methods of construction through the Agreement on Technical Barriers to Trade and the IAF Multilateral Recognition Arrangement (MLA), where these agreements:
- 1.11.1 State that conformity assessment procedures (i.e., ISO/IEC 17020, 17025, 17065, etc.) are prepared, adopted, and applied so as to grant access for suppliers of like products originating in the territories of other Members under conditions no less favourable than those accorded to suppliers of like products of national origin or originating in any other country, in a comparable situation.
  - 1.11.2 **Approved:** The purpose of the MLA is to ensure mutual recognition of accredited certification and validation/verification statements between signatories to the MLA and subsequently, acceptance of accredited certification and validation/verification statements in many markets based on one accreditation for the timely approval of innovative materials, designs, services, and/or methods of construction.
  - 1.11.3 ANAB is an IAF-MLA signatory where recognition of certificates, validation, and verification statements issued by conformity assessment bodies accredited by all other signatories of the IAF MLA, with the appropriate scope, shall be approved.<sup>58</sup>
  - 1.11.4 Therefore, all ANAB ISO/IEC 17065 duly authenticated reports are approval equivalent.<sup>59</sup>
- 1.12** Approval equity is a fundamental commercial and legal principle.<sup>60</sup>



Issue Date: January 10, 2022

Subject to Renewal: January 1, 2026

## FBC Supplement to Report Number 1407-09

REPORT HOLDER: National Shelter Products, Inc.

### 1 Evaluation Subject

- 1.1 DRYline TSX (Black) Structural Sheathing

### 2 Purpose and Scope

- 2.1 Purpose
  - 2.1.1 The purpose of this Report Supplement is to show DRYline TSX (Black) Structural Sheathing, recognized in Report Number 1407-09, has also been evaluated for compliance with the codes listed below as adopted by the Florida Building Commission.
- 2.2 *Applicable Code Editions*
  - 2.2.1 *FBC-B—20, 23: Florida Building Code – Building (FL47188)*
  - 2.2.2 *FBC-R—20, 23: Florida Building Code – Residential (FL47188)*

### 3 Conclusions

- 3.1 DRYline TSX (Black) Structural Sheathing, described in Report Number 1407-09, complies with the FBC-B and FBC-R and is subject to the conditions of use described in this supplement.
- 3.2 Where there are variations between the IBC and IRC and the FBC-B and FBC-R applicable to this report, they are listed here:
  - 3.2.1 FBC-B Section 104.4, Section 110.3.10, Section 110.4 and Section 1613 are reserved.
  - 3.2.2 FBC-R Section R104 and Section R109, Section R602.10, Table R602.10.3(1), Table R602.10.3(2), Table R602.10.3(3), Table R602.10.3(4), Section R602.10.4, Section R602.10.5, Table R602.10.5, Section R602.10.6.2, Section R602.10.6.4 and Table R602.10.6.4 are reserved.
  - 3.2.3 FBC-B Section 1404.2 replaces IBC Section 1403.2.
  - 3.2.4 FBC-B Section 1609.1.1 replaces IBC Section 1609.1.1.
  - 3.2.5 FBC-B Section 1705 is reserved and replaces IBC Section 1705.12 and IBC Section 1705.13.
  - 3.2.6 FBC-B Section 2306.1 replaces IBC Section 2306.1.
  - 3.2.7 FBC-B Section 2306.3 replaces IBC Section 2306.3.
  - 3.2.8 FBC-B Section 2308 is reserved and replaces IBC Section 2308.6.
  - 3.2.9 FBC-R Section R301.1 replaces IRC Section R301.1.
  - 3.2.10 FBC-R Section R301.2.1 replaces IRC Section R301.2.1.
  - 3.2.11 FBC-R Section R703.2 replaces IRC Section R703.2.
  - 3.2.12 FBC-R Section N1101.1 replaces IRC Section N1102.4.1.1.



#### 4 Conditions of Use

- 4.1 DRYline TSX (Black) Structural Sheathing, described in Report Number 1407-09, must comply with all of the following conditions:
  - 4.1.1 All applicable sections in Report Number 1407-09.
  - 4.1.2 The design, installation, and inspections are in accordance with additional requirements of FBC-B Chapter 16 and Chapter 17, as applicable.



## Notes

- 1 For more information, visit [drjcertification.org](http://drjcertification.org) or call us at 608-310-6748.
- 2 <https://up.codes/viewer/wyoming/ibc-2021/chapter/17/special-inspections-and-tests#1702>
- 3 Alternative Materials, Design and Methods of Construction and Equipment: The provisions of any regulation code are not intended to prevent the installation of any material or to prohibit any design or method of construction not specifically prescribed by a regulation. Please review <https://www.justice.gov/atr/mission> and <https://up.codes/viewer/colorado/ibc-2021/chapter/1/scope-and-administration#104.11>
- 4 <https://up.codes/viewer/wyoming/ibc-2021/chapter/17/special-inspections-and-tests#1706>:-:text=the%20design%20strengths%20and%20permissible%20stresses%20shall%20be%20established%20by%20tests%20as
- 5 The design strengths and permissible stresses of any structural material shall conform to the specifications and methods of design of accepted engineering practice. <https://up.codes/viewer/wyoming/ibc-2021/chapter/17/special-inspections-and-tests#1706>:-:text=shall%20conform%20to%20the%20specifications%20and%20methods%20of%20design%20of%20accepted%20engineering%20practice
- 6 <https://up.codes/viewer/wyoming/ibc-2021/chapter/17/special-inspections-and-tests#1707>:-:text=the%20building%20official%20shall%20accept%20duly%20authenticated%20reports%20from%20approved%20agencies
- 7 <https://up.codes/viewer/wyoming/ibc-2021/chapter/17/special-inspections-and-tests#1703.4.2>
- 8 [https://up.codes/viewer/wyoming/ibc-2021/chapter/2/definitions#approved\\_agency](https://up.codes/viewer/wyoming/ibc-2021/chapter/2/definitions#approved_agency)
- 9 [https://up.codes/viewer/wyoming/ibc-2021/chapter/2/definitions#approved\\_source](https://up.codes/viewer/wyoming/ibc-2021/chapter/2/definitions#approved_source)
- 10 <https://www.law.cornell.edu/uscode/text/18/1832> (b) Any organization that commits any offense described in subsection (a) shall be fined not more than the greater of \$5,000,000 or 3 times the value of the stolen trade secret to the organization, including expenses for research and design and other costs of reproducing the trade secret that the organization has thereby avoided. The federal government and each state have a public records act. To follow DTSA and comply state public records and trade secret legislation requires approval through ANAB ISO/IEC 17065 accredited certification bodies or approved sources. For more information, please review this website: [Intellectual Property and Trade Secrets](https://www.ipandts.com/).
- 11 <https://www.nspe.org/resources/issues-and-advocacy/professional-policies-and-position-statements/regulation-professional> AND <https://apassociation.org/list-of-engineering-boards-in-each-state-archive/>
- 12 <https://www.cbiteest.com/accreditation/>
- 13 <https://up.codes/viewer/colorado/ibc-2021/chapter/1/scope-and-administration#104.11>:-:text=to%20enforce%20the%20provisions%20of%20this%20code
- 14 <https://up.codes/viewer/colorado/ibc-2021/chapter/1/scope-and-administration#104.11>:-:text=Where%20the%20alternative%20material%20design%20or%20method%20of%20construction%20is%20not%20approved%20the%20building%20official%20shall%20respond%20in%20writing%20stating%20the%20reasons%20why%20the%20alternative%20was%20not%20approved AND <https://up.codes/viewer/colorado/ibc-2021/chapter/1/scope-and-administration#105.3.1>:-:text=If%20the%20application%20or%20the%20construction%20documents%20do%20not%20conform%20to%20the%20requirements%20of%20pertinent%20laws%20the%20building%20official%20shall%20reject%20such%20application%20in%20writing%20stating%20the%20reasons%20therefore
- 15 <https://up.codes/viewer/colorado/ibc-2021/chapter/17/special-inspections-and-tests#1707>:-:text=the%20building%20official%20shall%20accept%20duly%20authenticated%20reports%20from%20approved%20agencies%20in%20respect%20to%20the%20quality%20and%20manner%20of%20use%20of%20new%20materials%20or%20assemblies%20as%20provided%20for%20in%20Section%20104.11
- 16 <https://iaf.eu/en/about-iaf-mia/#>:-:text=it%20is%20required%20to%20recognise%20certificates%20and%20validation%20and%20verification%20statements%20issued%20by%20conformity%20assessment%20bodies%20accredited%20by%20all%20other%20signatories%20of%20the%20IAF%20MLA%20with%20the%20appropriate%20scope
- 17 True for all ANAB accredited product evaluation agencies and all International Trade Agreements.
- 18 <https://www.justice.gov/crt/deprivation-rights-under-color-law> AND <https://www.justice.gov/atr/mission>
- 19 Unless otherwise noted, all references in this Listing are from the 2021 version of the codes and the standards referenced therein. This material, product, design, service and/or method of construction also complies with the 2000-2021 versions of the referenced codes and the standards referenced therein.
- 20 All references to the FBC-B and FBC-R are the same as the 2021 IBC and 2021 IRC unless otherwise noted in the Florida Supplement at the end of this report.
- 21 <https://www.ecfr.gov/current/title-24/subtitle-B/chapter-XX/part-3280#p-3280.2>(Listed%20or%20certified); <https://up.codes/viewer/colorado/ibc-2021/chapter/2/definitions#labeled> AND <https://up.codes/viewer/colorado/ibc-2021/chapter/2/definitions#labeled>
- 22 2015 IBC Section 1404.2
- 23 2015 IBC Section 1404.2
- 24 <https://up.codes/viewer/colorado/ibc-2021/chapter/17/special-inspections-and-tests#1703.4>
- 25 <https://www.ecfr.gov/current/title-24/subtitle-B/chapter-XX/part-3280#p-3280.2>:-:text=All%20construction%20methods%20shall%20be%20in%20conformance%20with%20accepted%20engineering%20practices%20to%20insure%20durable%20livable%20and%20safe%20housing%20and%20shall%20demonstrate%20acceptable%20workmanship%20reflecting%20journeyman%20quality%20of%20work%20of%20the%20various%20trades
- 26 <https://www.ecfr.gov/current/title-24/subtitle-B/chapter-XX/part-3280#p-3280.2>:-:text=The%20strength%20and%20rigidity%20of%20the%20component%20parts%20and/or%20the%20integrated%20structure%20shall%20be%20determined%20by%20engineering%20analysis%20or%20by%20suitable%20load%20tests%20to%20simulate%20the%20actual%20loads%20and%20conditions%20of%20application%20that%20occur
- 27 2015 IBC Section 1404.2
- 28 Qualification is performed by a legislatively defined Accreditation Body. ANSI National Accreditation Board (ANAB) is the largest independent accreditation body in North America and provides services in more than 75 countries. DrJ is an ANAB accredited product certification body.
- 29 See Code of Federal Regulations (CFR) Title 24 Subtitle B Chapter XX Part 3280 for definition.
- 30 2015 IBC Section 1404.2
- 31 2018 IECC Section C402.5.1.2.1



2018 IFC Section 104.9

Approved is an adjective that modifies the noun after it. For example, Approved Agency means that the Agency is accepted officially as being suitable in a particular situation. This example conforms to IBC/IRC/IFC Section 201.4 where the building code authorizes sentences to have an ordinarily accepted meaning such as the context implies.

<https://up.codes/viewer/wyoming/ibc-2021/chapter/17/special-inspections-and-tests#1707.1>

Multilateral approval is true for all ANAB accredited product evaluation agencies and all International Trade Agreements.

2018 IBC Section 1705.12

2018 IBC Section 1705.11

2018 IBC Section 110.3.9, 2015 IBC Section 110.3.8

<http://www.drjengineering.org/AppendixC> AND <https://www.drjcertification.org/cornell-2016-protection-trade-secrets>

<https://www.law.cornell.edu/uscode/text/18/1832#:~:text=imprisoned%20not%20more%20than%2010%20years>

<https://www.law.cornell.edu/uscode/text/18/1832#:~:text=Any%20organization%20that,has%20thereby%20avoided>

<https://up.codes/viewer/wyoming/ibc-2021/chapter/17/special-inspections-and-tests#1706.2>

IBC 2021, Section 1706.1 Conformance to Standards

IBC 2021, Section 1707 Alternative Test Procedure, 1707.1 General

See Section 11 for the distilled building code definition of **Approved**

Los Angeles Municipal Code, SEC. 98.0503. TESTING AGENCIES

<https://up.codes/viewer/california/ca-building-code-2022/chapter/17/special-inspections-and-tests#1707.1>

New York City, The Rules of the City of New York, § 101-07 Approved Agencies

New York City, The Rules of the City of New York, § 101-07 Approved Agencies

<https://up.codes/viewer/new-jersey/ibc-2018/chapter/17/special-inspections-and-tests#1707.1>

<https://www.nj.gov/dca/divisions/codes/codreg/ucc.html>

<https://www.ecfr.gov/current/title-24/subtitle-B/chapter-XX/part-3282/subpart-A/section-3282.14>

<https://www.ecfr.gov/current/title-24/subtitle-B/chapter-XX/part-3280>

IBC 2021, Section 1706 Design Strengths of Materials, 1706.2 New Materials. Adopted law pursuant to IBC model code language 1706.2.

IBC 2021, Section 1707 Alternative Test Procedure, 1707.1 General. Adopted law pursuant to IBC model code language 1707.1.

<https://www.nspe.org/resources/issues-and-advocacy/professional-policies-and-position-statements/regulation-professional> AND <https://apassociation.org/list-of-engineering-boards-in-each-state-archive/>

IBC 2021, Section 1706 Design Strengths of Materials, Section 1706.1 Conformance to Standards Adopted law pursuant to IBC model code language 1706.1.

<https://iaf.nu/en/about-iaf-mla/#:~:text=it%20is%20required%20to%20recognise%20certificates%20and%20validation%20and%20verification%20statements%20issued%20by%20conformity%20assessment%20bodies%20accredited%20by%20all%20other%20signatories%20of%20the%20IAF%20MLA%2C%20with%20the%20appropriate%20scope>

True for all ANAB accredited product evaluation agencies and all International Trade Agreements.

<https://www.justice.gov/crt/deprivation-rights-under-color-law> AND <https://www.justice.gov/atr/mission>