

Listing

Report No: 2205-03



Issue Date: August 8, 2022

Revision Date: September 24, 2024

Subject to Renewal: October 1, 2025

TrimJoist® Properties

Trade Secret Report Holder:

Trimjoist Corporation

Phone: 800-844-8281

Website: www.trimjoist.com

Email: info@trimjoist.com

CSI Designations:

DIVISION: 06 00 00 - WOOD, PLASTICS AND COMPOSITES

Section: 06 11 00 - Wood Framing

Section: 06 17 33 - Wood I-joists

Section: 06 17 00 - Shop-Fabricated Structural Wood

Section: 06 17 53 - Shop-Fabricated Wood Trusses

1 Innovative Product Evaluated¹

1.1 TrimJoist®

2 Product Description and Materials

2.1 The innovative product evaluated in this report is shown in **Figure 1**.



Figure 1. TrimJoist



- 2.2 TrimJoist is an open web, prefabricated, metal plate connected, trimmable end wood floor truss designed and manufactured in accordance with ANSI/TPI 1-2014: National Design Standard for Metal Plate Connected Wood Truss Construction.
- 2.2.1 Standard width of the flanges is 3 $\frac{1}{2}$ ".
- 2.2.2 TrimJoist is available in the following depths:
- 2.2.2.1 11 $\frac{7}{8}$ " (J12 Series)
- 2.2.2.2 14" (J14 Series)
- 2.2.2.3 16" (J16 Series)
- 2.2.2.4 18" (J18 Series)
- 2.2.2.5 20" (J20 Series)
- 2.2.3 Each TrimJoist has a 12" trimmable region at each end of the product.
- 2.2.4 TrimJoist is available in the following lengths (product comes in two-foot incremental lengths):
- 2.2.4.1 J12 Series: 4 ft to 24 ft.
- 2.2.4.2 J14 Series: 4 ft to 26 ft.
- 2.2.4.3 J16 Series: 4 ft to 28 ft.
- 2.2.4.4 J18 Series: 4 ft to 30 ft.
- 2.2.4.5 J20 Series: 4 ft to 32 ft.
- 2.3 Proprietary metal connector plates are used to transmit forces from one wood member, to one or more wood members, where wood members are connected using integral teeth formed from the metal plate and subsequently embedded into each wood member at a truss joint.
- 2.4 Commodity lumber design values (E , E_{min} , $F_{c\perp}$, and F_v), specified in the ANSI/AWC National Design Specification® (NDS) for Wood Construction, are used in all engineering mechanics based equations.
- 2.4.1 Sawn lumber used for load-supporting purposes, including end-jointed, edge-glued, machine stress rated or machine-evaluated lumber, shall be identified by the Grade mark of a lumber grading or inspection agency that has been approved by an Accreditation Body that complies with the latest edition of the DOC PS 20 American Softwood Lumber Standard, or equivalent.
- 2.4.2 TrimJoist relies on each lumber manufacturer to provide building code conforming design values, conditions of use, quality and repair requirements, as well as compliance to DOC PS 20 and the NDS Supplement, as relevant.
- 2.5 Truss member axial forces, bending moments and effective buckling lengths are based on a mathematical model of the truss that closely approximates the geometry and properties of the truss members and connections.
- 2.6 As needed, review material properties for design in Section 6.

3 Definitions

- 3.1 New Materials² are defined as building materials, equipment, appliances, systems or methods of construction not provided for by prescriptive and/or legislatively adopted regulations, known as alternative materials.³ The design strengths and permissible stresses shall be established by tests⁴ and/or engineering analysis.⁵
- 3.2 Duly Authenticated Reports⁶ and Research Reports⁷ are test reports and related engineering evaluations, which are written by an approved agency⁸ and/or an approved source.⁹
- 3.2.1 These reports contain intellectual property and/or trade secrets, which are protected by the Defend Trade Secrets Act (DTSA).¹⁰



- 3.3 An approved agency is “approved” when it is ANAB ISO/IEC 17065 accredited. DrJ Engineering, LLC (DrJ) is listed in the ANAB directory.
- 3.4 An approved source is “approved” when a professional engineer (i.e., Registered Design Professional) is properly licensed to transact engineering commerce. The regulatory authority governing approved sources is the state legislature via its professional engineering regulations.¹¹
- 3.5 Testing and/or inspections conducted for this Duly Authenticated Report were performed by an ISO/IEC 17025 accredited testing laboratory, an ISO/IEC 17020 accredited inspection body and/or a licensed Registered Design Professional (RDP).
- 3.5.1 The Center for Building Innovation (CBI) is ANAB¹² ISO/IEC 17025 and ISO/IEC 17020 accredited.
- 3.6 The regulatory authority shall enforce¹³ the specific provisions of each legislatively adopted regulation. If there is a non-conformance, the specific regulatory section and language of the non-conformance shall be provided in writing¹⁴ stating the nonconformance and the path to its cure.
- 3.7 The regulatory authority shall accept Duly Authenticated Reports from an approved agency and/or an approved source with respect to the quality and manner of use of new materials or assemblies as provided for in regulations regarding the use of alternative materials, designs or methods of construction.¹⁵
- 3.8 ANAB is an International Accreditation Forum (IAF) Multilateral Recognition Arrangement (MLA) signatory where recognition of certificates, validation and verification statements issued by conformity assessment bodies accredited by all other signatories of the IAF MLA with the appropriate scope, shall be approved.¹⁶ Therefore, all ANAB ISO/IEC 17065 Duly Authenticated Reports are approval equivalent.¹⁷
- 3.9 Approval equity is a fundamental commercial and legal principle.¹⁸

4 Applicable Standards for the Listing; Regulations for the Regulatory Evaluation¹⁹

4.1 Standards

- 4.1.1 *ANSI/TPI 1- 2014: National Design Standard for Metal Plate Connected Wood Truss Construction*
- 4.1.2 *AWC TR15: Calculation of Sound Transmission Parameters for Wood-Frame Assemblies*
- 4.1.3 *ASTM E119: Standard Test Methods for Fire Tests of Building Construction and Materials*
- 4.1.4 *ASTM E413: Classification for Rating Sound Insulation*
- 4.1.5 *ASTM E2032: Standard Practice for Extension of Data From Fire Resistance Tests Conducted in Accordance with ASTM E 119*

5 Listed²⁰

- 5.1 Equipment, materials, products or services included in a List published by a nationally recognized testing laboratory (i.e., CBI), approved agency (i.e., CBI and DrJ), and/or approved source (i.e., DrJ) or other organization concerned with product evaluation (i.e., DrJ) that maintains periodic inspection (i.e., CBI) of production of listed equipment or materials, and whose listing states either that the equipment or material meets nationally recognized standards or has been tested and found suitable for use in a specified manner.



6 Tabulated Properties Generated from Nationally Recognized Standards

6.1 Structural Applications

- 6.1.1 TrimJoist is designed using proprietary engineering methodology that generate maximum spans and maximum reactions for each TrimJoist series as shown in **Table 1** and **Table 2**.

Table 1. TrimJoist Maximum Span Table for Resistance to Uniform Loads, L/480 Deflection Limit

Product Series	Depth	Joist Spacing			
		12" o.c.	16" o.c.	19.2" o.c.	24" o.c.
J12	117/8"	24' 0"	23' 2"	21' 9"	20' 2"
J14	14"	26' 0"	26' 0"	24' 7"	22' 9"
J16	16"	28' 0"	28' 0"	27' 1"	25' 1"
J18	18"	30' 0"	30' 0"	29' 6"	27' 2"
J20	20"	32' 0"	32' 0"	31' 10"	29' 6"

SI: 1 in = 25.4 mm, 1 ft = 0.305 m

- 40-psf Live Load + 15-psf Dead Load = 55-psf Total Load.
- Live Load Deflection based on L/480.
- Values assume a 13/4" minimum bearing evenly trimmed.
- Values are for simply supported joists and include the use of a repetitive member factor.
- Values assume a minimum 3/4" span-rated subfloor that has been both glued and nailed.

Table 2. TrimJoist Maximum Span Table for Resistance to Uniform Loads, L/600 Deflection Limit

Product Series	Depth	Joist Spacing			
		12" o.c.	16" o.c.	19.2" o.c.	24" o.c.
J12	117/8"	23' 8"	21' 6"	20' 2"	18' 8"
J14	14"	26' 0"	24' 3"	22' 8"	21' 0"
J16	16"	28' 0"	26' 8"	25' 1"	23' 2"
J18	18"	30' 0"	29' 1"	27' 4"	25' 3"
J20	20"	32' 0"	31' 6"	29' 6"	27' 3"

SI: 1 in = 25.4 mm, 1 ft = 0.305 m

- 40-psf Live Load + 15-psf Dead Load = 55-psf Total Load.
- Live Load Deflection based on L/600.
- Values assume a 13/4" minimum bearing evenly trimmed.
- Values are for simply supported joists and include the use of a repetitive member factor.
- Values assume a minimum 3/4" span-rated subfloor that has been both glued and nailed.

6.1.2 TrimJoist is designed using proprietary engineering methodology to generate maximum reactions as shown in **Table 3**.

Table 3. TrimJoist Maximum Reaction Table

Width	Maximum Bearing Capacity (lb)
1 ³ / ₄ "	3,000
3 ¹ / ₂ "	3,500
5 ¹ / ₂ "	4,000

SI: 1 in = 25.4 mm, 1 lb = 4.48 N

6.2 Fire Resistance Rated Assembly

6.2.1 The following assemblies are modified UL designs allowing for the use of TrimJoist.

6.2.2 The extension of the listings are based on ASTM E119 fire testing of the components, ASTM E2032 and generally accepted engineering principles.

6.2.2.1 One-Hour Fire Rating:

6.2.2.1.1 UL L528

6.2.2.2 TrimJoist one-hour fire rated assembly is shown in **Figure 2**. Details pertaining to the TrimJoist assembly and a comparison to an UL L528 assembly are provided in **Table 4**.

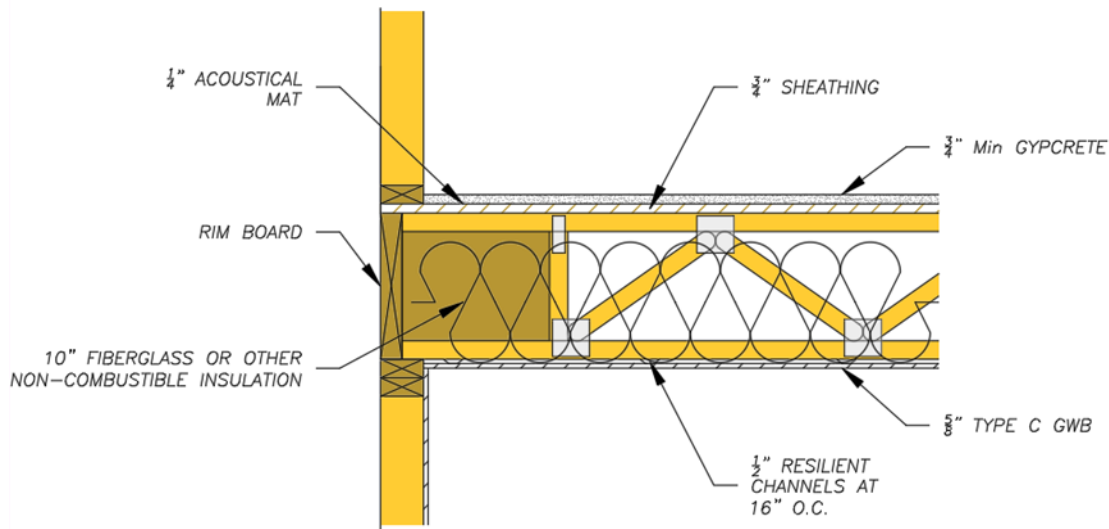


Figure 2. TrimJoist Fire Assembly

Table 4. TrimJoist One-Hour Fire Resistance Rated Assembly

Component		TrimJoist Assembly
Flooring System	Floor Topping (underlayment)	Minimum $\frac{3}{4}$ " thick gypsum concrete layer having a minimum compressive strength of 1,000 psi
	Acoustical Mat	$\frac{1}{4}$ " sound attenuation mat
	Floor Sheathing	Minimum $\frac{23}{32}$ " Wood Structural Panel (WSP), minimum grade, "C-D" or "sheathing" with face grain of plywood or strength axis of panels installed perpendicular to the truss with joints staggered.
Structural Member	Floor Joists/Trusses	TrimJoist parallel chord truss Spaced a maximum of 24" o.c. Minimum truss depth is 12" (nominal) when a ceiling damper is not employed. Minimum truss depth is 18" when a ceiling damper is employed.
Insulation	Batt/Blanket	10" thick fitted in the concealed space, draped over the resilient channel/gypsum board ceiling membrane.
Furring Channels	Resilient Channels	$\frac{1}{2}$ " deep resilient channel spaced 16" on center and installed perpendicular to trusses (minimum 25-gauge). Channels secured to each truss with $1\frac{5}{8}$ " long Type S bugle head steel screws. Channels overlapped 4" at splices.
Ceiling Membrane	Gypsum Board	Nominal $\frac{5}{8}$ " thick, 48" wide gypsum panels installed with long dimension perpendicular to resilient channels. Gypsum panels secured with 1" long Type S bugle head steel screws spaced 8" o.c. and located a minimum of $\frac{1}{2}$ " from side joints and" from the end joints.

6.3 Sound Transmission

6.3.1 Sound transmission class rating and impact insulation class rating of the TrimJoist Fire Assembly (see **Figure 2**) were determined using the empirical model described in American Wood Council [Technical Report No. 15](#) (AWC-TR15).

6.3.1.1 To be conservative, the elements of the airborne sound and structure-borne sound analysis for the TrimJoist assembly will be:

6.3.1.1.1 1 layer of $\frac{23}{32}$ " Oriented Strand Board (OSB) sheathing

6.3.1.1.2 1 layer of $\frac{5}{8}$ " Gypsum Wall Board (GWB)

6.3.1.1.3 Parallel-chord metal plate connected wood trusses ≤ 20 " deep spaced at 16" o.c or 24" o.c.

6.3.1.1.4 Minimum 3.5 minimum fiberglass batt or minimum 8.3" mineral wool batt insulation

6.3.1.1.5 Resilient channels spaced at 16" o.c.

6.3.2 The results from this calculation model did not take into account of the effects from the $\frac{3}{4}$ " gypsum concrete layer, nor the $\frac{1}{4}$ " acoustical mat layer.

6.3.2.1 These elements will provide greater resistance to sound transmission and therefore, provide a higher STC rating.

6.3.2.2 Additional calculations can be provided for specific applications.

6.3.3 The minimum STC rating for the TrimJoist Fire Assembly is shown in **Table 5**, and the IIC rating for various floor covering is provided in **Table 6**.

**Table 5.** TrimJoist Assembly Sound Transmission Class (STC)

Assembly	Joist Spacing	STC Rating
TrimJoist Fire Resistance Rated Assembly	16"	52
	24"	52

Table 6. TrimJoist Assembly Impact Insulation Class (IIC)

Assembly	Joist Spacing	Floor Covering	IIC Rating
TrimJoist Fire Resistance Rated Assembly	16"	Thin Carpet	60
		Thick Carpet	66
		Cushioned Vinyl	37
		Click Laminate	39
		Ceramic Tile	44
	24"	Thin Carpet	60
		Thick Carpet	66
		Cushioned Vinyl	41
		Click Laminate	43
		Ceramic Tile	45

- 6.4 Where the application falls outside of the performance evaluation, conditions of use and/or installation requirements set forth herein, alternative techniques shall be permitted in accordance with accepted engineering practice and experience. This includes but is not limited to the following areas of engineering: mechanics or materials, structural, building science and fire science.

7 Certified Performance²¹

- 7.1 All construction methods shall conform to accepted engineering practices to ensure durable, livable and safe construction and shall demonstrate acceptable workmanship reflecting journeyman quality of work of the various trades.²²
- 7.2 The strength and rigidity of the component parts and/or the integrated structure shall be determined by engineering analysis or by suitable load tests to simulate the actual loads and conditions of application that occur.²³

8 Installation

- 8.1 Installation shall comply with the approved construction documents, the manufacturer installation instructions, this report and the applicable building code.
- 8.2 In the event of a conflict between the manufacturer installation instructions and this report, the more restrictive shall govern.



9 Substantiating Data

- 9.1 Testing has been performed under the supervision of a professional engineer and/or under the requirements of ISO/IEC 17025 as follows:
- 9.1.1 Test data and span calculations from approved sources.
 - 9.1.2 Comparative analysis of equivalent design for one-hour fire rated assembly in accordance with ASTM E2032 and generally accepted fire-engineering principles.
 - 9.1.3 Calculation of STC and IIC ratings in accordance with AWC TR15 by DrJ Engineering.
- 9.2 Information contained herein may include the result of testing and/or data analysis by sources that are approved agencies, approved sources and/or RDPs. Accuracy of external test data and resulting analysis is relied upon.
- 9.3 Where pertinent, testing and/or engineering analysis are based upon provisions that have been codified into law through state or local adoption of regulations and standards. The developers of these regulations and standards are responsible for the reliability of published content. DrJ's engineering practice may use a regulation-adopted provision as the control. A regulation-endorsed control versus a simulation of the conditions of application to occur establishes a new material as being equivalent to the regulatory provision in terms of quality, strength, effectiveness, fire resistance, durability and safety.
- 9.4 The accuracy of the provisions provided herein may be reliant upon the published properties of raw materials, which are defined by the grade mark, grade stamp, mill certificate, or duly authenticated reports from approved agencies and/or approved sources provided by the supplier. These are presumed to be minimum properties and relied upon to be accurate. The reliability of DrJ's engineering practice, as contained in this Duly Authenticated Report, may be dependent upon published design properties by others.
- 9.5 Testing and engineering analysis: The strength, rigidity and/or general performance of component parts and/or the integrated structure are determined by suitable tests that simulate the actual conditions of application that occur and/or by accepted engineering practice and experience.²⁴
- 9.6 Where additional condition of use and/or regulatory compliance information is required, please search for TrimJoist on the DrJ Certification website.

10 Findings

- 10.1 As outlined in **Section 6**, TrimJoist has performance characteristics that were tested and/or meet applicable regulations and is suitable for use pursuant to its specified purpose.
- 10.2 When used and installed in accordance with this Duly Authenticated Report and the manufacturer installation instructions, TrimJoist shall be approved for the following applications:
- 10.2.1 Compliance with ANSI TPI 1-2014
 - 10.2.2 Use in 1-hour fire rated assemblies
 - 10.2.3 Use where an STC rating less than 52 is required
 - 10.2.4 IIC ratings per various floor coverings as shown in **Table 6**
- 10.3 Unless exempt by state statute, when TrimJoist is to be used as a structural and/or building envelope component in the design of a specific building, the design shall be performed by an RDP.
- 10.4 Any application specific issues not addressed herein can be engineered by an RDP. Assistance with engineering is available from Trimjoist Corporation.



10.5 IBC Section 104.11 (IRC Section R104.11 and IFC Section 104.10²⁵ are similar) in pertinent part states:

104.11 Alternative materials, design and methods of construction and equipment. The provisions of this code are not intended to prevent the installation of any material or to prohibit any design or method of construction not specifically prescribed by this code. Where the alternative material, design or method of construction is not approved, the building official shall respond in writing, stating the reasons the alternative was not approved.

10.6 **Approved:**²⁶ Building regulations require that the building official shall accept Duly Authenticated Reports.²⁷

10.6.1 An approved agency is “*approved*” when it is ANAB ISO/IEC 17065 accredited.

10.6.2 An approved source is “*approved*” when an RDP is properly licensed to transact engineering commerce.

10.6.3 Federal law, Title 18 US Code Section 242, requires that where the alternative product, material, service, design, assembly and/or method of construction is not approved, the building official shall respond in writing, stating the reasons why the alternative was not approved. Denial without written reason deprives a protected right to free and fair competition in the marketplace.

10.7 DrJ is a licensed engineering company, employs licensed RDPs and is an ANAB-Accredited Product Certification Body – Accreditation #1131.

10.8 Through the IAF Multilateral Agreements (MLA), this Duly Authenticated Report can be used to obtain product approval in any jurisdiction or country because all ANAB ISO/IEC 17065 Duly Authenticated Reports are equivalent.²⁸

11 Conditions of Use

11.1 Material properties shall not fall outside the boundaries defined in **Section 6**.

11.2 As defined in **Section 6**, where material and/or engineering mechanics properties are created for load resisting design purposes, the resistance to the applied load shall not exceed the ability of the defined properties to resist those loads using the principles of accepted engineering practice.

11.3 As listed herein, TrimJoist shall not be used:

11.3.1 Allowable maximum spans for resistance to transverse loads shall not exceed those as described in **Section 6**.

11.3.2 Allowable maximum reactions for resistance to transverse loads shall not exceed those described in **Section 6**.

11.3.3 Allowable deflection shall not exceed limits described in **Section 6**.

11.3.4 Use of the span charts shown in **Section 6** must be in accordance with footnotes herein.

11.3.5 TrimJoist has a “*top*” orientation and shall not be installed upside-down.

11.3.6 Special applications requiring concentrated loads, asymmetric continuous loads, cantilevers or special bearing conditions are outside the scope of this report.

11.4 To meet the 1-hour fire resistance rating, the components of the proposed assembly shall be installed as specified in UL L528.



- 11.5 When required by adopted legislation and enforced by the building official, also known as the authority having jurisdiction (AHJ) in which the project is to be constructed:
- 11.5.1 Any calculations incorporated into the construction documents shall conform to accepted engineering practice and, when prepared by an approved source, shall be approved when signed and sealed.
 - 11.5.2 This report and the installation instructions shall be submitted at the time of permit application.
 - 11.5.3 This innovative product has an internal quality control program and a third-party quality assurance program.
 - 11.5.4 At a minimum, this innovative product shall be installed per Section 8 of this report.
 - 11.5.5 The review of this report by the AHJ shall comply with IBC Section 104 and IBC Section 105.4.
 - 11.5.6 This innovative product has an internal quality control program and a third party quality assurance program in accordance with IBC Section 104.4, IBC Section 110.4, IBC Section 1703, IRC Section R104.4 and IRC Section R109.2.
 - 11.5.7 The application of this innovative product in the context of this report is dependent upon the accuracy of the construction documents, implementation of installation instructions, inspection as required by IBC Section 110.3, IRC Section R109.2 and any other regulatory requirements that may apply.
- 11.6 The approval of this report by the AHJ shall comply with IBC Section 1707.1, where legislation states in part, “the building official shall accept duly authenticated reports from approved agencies in respect to the quality and manner of use of new material or assemblies as provided for in Section 104.11”, all of IBC Section 104 and IBC Section 105.4.
- 11.7 Design loads shall be determined in accordance with the regulations adopted by the jurisdiction in which the project is to be constructed and/or by the building designer (i.e., owner or RDP).
- 11.8 The actual design, suitability and use of this report for any particular building, is the responsibility of the owner or the authorized agent of the owner.

12 Identification

- 12.1 The innovative product listed in Section 1.1 is identified by a label on the board or packaging material bearing the manufacturer name, product name, this report number and other information to confirm code compliance.
- 12.2 Additional technical information can be found at www.trimjoist.com.

13 Review Schedule

- 13.1 This report is subject to periodic review and revision. For the latest version, visit www.drjcertification.org.
- 13.2 For information on the status of this report, please contact [DrJ Certification](#).

14 Approved for Use Pursuant to U.S. and International Legislation Defined in Appendix A

- 14.1 TrimJoist is included in this report published by an approved agency that is concerned with evaluation of products or services, maintains periodic inspection of the production of listed materials or periodic evaluation of services. This report states either that the material, product, or service meets recognized standards or has been tested and found suitable for a specified purpose. This report meets the legislative intent and definition of being acceptable to the AHJ.



Appendix A

1 Legislation that Authorizes AHJ Approval

- 1.1 **Fair Competition:** State legislatures have adopted Federal regulations for the examination and approval of building code referenced and alternative products, materials, designs, services, assemblies and/or methods of construction that:
 - 1.1.1 Advance innovation,
 - 1.1.2 Promote competition so all businesses have the opportunity to compete on price and quality in an open market on a level playing field unhampered by anticompetitive constraints, and
 - 1.1.3 Benefit consumers through lower prices, better quality and greater choice.
- 1.2 **Adopted Legislation:** The following local, state and federal regulations affirmatively authorize this innovative product to be approved by AHJs, delegates of building departments and/or delegates of an agency of the federal government:
 - 1.2.1 Interstate commerce is governed by the Federal Department of Justice to encourage the use of innovative products, materials, designs, services, assemblies and/or methods of construction. The goal is to “*protect economic freedom and opportunity by promoting free and fair competition in the marketplace.*”
 - 1.2.2 Title 18 US Code Section 242 affirms and regulates the right of individuals and businesses to freely and fairly have new products, materials, designs, services, assemblies and/or methods of construction approved for use in commerce. Disapproval of alternatives shall be based upon non-conformance with respect to specific provisions of adopted legislation and shall be provided in writing stating the reasons why the alternative was not approved, with reference to the specific legislation violated.
 - 1.2.3 The federal government and each state have a public records act. In addition, each state also has legislation that mimics the federal Defend Trade Secrets Act 2016 (DTSA),²⁹ where providing test reports, engineering analysis and/or other related IP/TS is subject to prison of not more than ten years³⁰ and/or a \$5,000,000 fine or 3 times the value of³¹ the Intellectual Property (IP) and Trade Secrets (TS).
 - 1.2.3.1 Compliance with public records and trade secret legislation requires approval through the use of Listings, certified reports, Technical Evaluation Reports, Duly Authenticated Reports and/or research reports prepared by approved agencies and/or approved sources.
 - 1.2.4 For new materials³² that are not specifically provided for in any regulation, the design strengths and permissible stresses shall be established by tests, where suitable load tests simulate the actual loads and conditions of application that occur.
 - 1.2.5 The design strengths and permissible stresses of any structural material shall conform to the specifications and methods of design using accepted engineering practice.³³
 - 1.2.6 The commerce of approved sources (i.e., registered PEs) is regulated by professional engineering legislation. Professional engineering commerce shall always be approved by AHJs, except where there is evidence provided in writing, that specific legislation have been violated by an individual registered PE.
 - 1.2.7 The AHJ shall accept Duly Authenticated Reports from approved agencies in respect to the quality and manner of use of new materials or assemblies as provided for in IBC Section 104.11.³⁴



- 1.3 **Approved³⁵ by Los Angeles:** The Los Angeles Municipal Code (LAMC) states in pertinent part that the provisions of LAMC are not intended to prevent the use of any material, device, or method of construction not specifically prescribed by LAMC. The Department shall use Part III, Recognized Standards in addition to Part II, Uniform Building Code Standards of Division 35, Article 1, Chapter IX of the LAMC in evaluation of products for approval where such standard exists for the product or the material and may use other approved standards that apply. Whenever tests or certificates of any material or fabricated assembly are required by Chapter IX of the LAMC, such tests or certification shall be made by a testing agency approved by the Superintendent of Building to conduct such tests or provide such certifications. The testing agency shall publish the scope and limitation(s) of the listed material or fabricated assembly.³⁶ The Superintendent of Building Approved Testing Agency Roster is provided by the Los Angeles Department of Building and Safety (LADBS). The Center for Building Innovation (CBI) Certificate of Approval License is TA24945. Tests and certifications found in a DrJ Listing are LAMC approved. In addition, the Superintendent of Building shall accept Duly Authenticated Reports from approved agencies in respect to the quality and manner of use of new materials or assemblies as provided for in the California Building Code (CBC) Section 1707.1.³⁷
- 1.4 **Approved by Chicago:** The Municipal Code of Chicago (MCC) states in pertinent part that an Approved Agency is a Nationally Recognized Testing Laboratory (NRTL) acting within its recognized scope and/or a certification body accredited by the American National Standards Institute (ANSI) acting within its accredited scope. Construction materials and test procedures shall conform to the applicable standards listed in the MCC. Sufficient technical data shall be submitted to the building official to substantiate the proposed use of any product, material, service, design, assembly and/or method of construction not specifically provided for in the MCC. This technical data shall consist of research reports from approved sources (i.e., MCC defined Approved Agencies).
- 1.5 **Approved by New York City:** The 2022 NYC Building Code (NYCBC) states in part that an approved agency shall be deemed³⁸ an approved testing agency via ISO/IEC 17025 accreditation, an approved inspection agency via ISO/IEC 17020 accreditation and an approved product evaluation agency via ISO/IEC 17065 accreditation. Accrediting agencies, other than federal agencies, must be members of an internationally recognized cooperation of laboratory and inspection accreditation bodies subject to a mutual recognition agreement³⁹ (i.e., ANAB, International Accreditation Forum (IAF), etc.).
- 1.6 **Approved by Florida:** Statewide approval of products, methods, or systems of construction shall be approved, without further evaluation by:
- 1.6.1 A certification mark or listing of an approved certification agency,
 - 1.6.2 A test report from an approved testing laboratory,
 - 1.6.3 A product evaluation report based upon testing or comparative or rational analysis, or a combination thereof, from an approved product evaluation entity, or
 - 1.6.4 A product evaluation report based upon testing, comparative or rational analysis, or a combination thereof, developed, signed and sealed by a professional engineer or architect, licensed in Florida.
- 1.7 For local product approval, products or systems of construction shall demonstrate compliance with the structural wind load requirements of the Florida Building Code (FBC) through one of the following methods:
- 1.7.1 A certification mark, listing or label from a commission-approved certification agency indicating that the product complies with the code,
 - 1.7.2 A test report from a commission-approved testing laboratory indicating that the product tested complies with the code,
 - 1.7.3 A product-evaluation report based upon testing, comparative or rational analysis, or a combination thereof, from a commission-approved product evaluation entity which indicates that the product evaluated complies with the code,



- 1.7.4 A product-evaluation report or certification based upon testing or comparative or rational analysis, or a combination thereof, developed and signed and sealed by a Florida professional engineer or Florida registered architect, which indicates that the product complies with the code, or
- 1.7.5 A statewide product approval issued by the Florida Building Commission.
- 1.8 The [Florida Department of Business and Professional Regulation](#) (DBPR) website provides a listing of companies certified as a [Product Evaluation Agency](#) (i.e., EVLMiami 13692), a [Product Certification Agency](#) (i.e., CER10642) and as a [Florida Registered Engineer](#) (i.e., ANE13741).
- 1.9 **Approved by Miami-Dade County (i.e., Notice of Acceptance [NOA]):** A Florida statewide approval is an NOA. An NOA is a Florida local product approval. By Florida law, Miami-Dade County shall accept the statewide and local Florida Product Approval as provided for in Florida legislation [553.842](#) and [553.8425](#).
- 1.10 **Approved by New Jersey:** Pursuant to the 2018 Building Code of New Jersey in [IBC Section 1707.1 General](#),⁴⁰ it states: *“In the absence of approved rules or other approved standards, the building official shall accept duly authenticated reports from [approved agencies](#) in respect to the quality and manner of use of new materials or assemblies as provided for in the administrative provisions of the Uniform Construction Code (N.J.A.C. 5:23)”*.⁴¹ Furthermore N.J.A.C 5:23-3.7 states: *“Municipal approvals of alternative materials, equipment, or methods of construction.”*
- 1.10.1 **Approvals:** Alternative materials, equipment, or methods of construction shall be approved by the appropriate subcode official provided the proposed design is satisfactory and that the materials, equipment, or methods of construction are suitable for the intended use and are at least the equivalent in quality, strength, effectiveness, fire resistance, durability and safety of those conforming with the requirements of the regulations.
- 1.10.1.1 A field evaluation label and report or letter issued by a nationally recognized testing laboratory verifying that the specific material, equipment, or method of construction meets the identified standards or has been tested and found to be suitable for the intended use, shall be accepted by the appropriate subcode official as meeting the requirements of the above.
- 1.10.1.2 Reports of engineering findings issued by nationally recognized evaluation service programs such as but not limited to, the Building Officials and Code Administrators (BOCA), the International Conference of Building Officials (ICBO), the Southern Building Code Congress International (SBCCI), the International Code Council (ICC) and the National Evaluation Service, Inc., shall be accepted by the appropriate subcode official as meeting the requirements of the above.
- 1.10.2 The [New Jersey Department of Community Affairs](#) has confirmed that technical evaluation reports, from any accredited entity listed by [ANAB](#), meets the requirements of item the previous paragraph, given that the listed entities are no longer in existence and/or do not provide *“reports of engineering findings”*.
- 1.11 **Approved by the Code of Federal Regulations Manufactured Home Construction and Safety Standards:** Pursuant to Title 24, Subtitle B, Chapter XX, [Part 3282.14](#)⁴² and [Part 3280](#),⁴³ the Department encourages innovation and the use of new technology in manufactured homes. The design and construction of a manufactured home shall conform to the provisions of Part 3282 and Part 3280 where key approval provisions in mandatory language follow:
- 1.11.1 *“All construction methods shall be in conformance with accepted engineering practices.”*
- 1.11.2 *“The strength and rigidity of the component parts and/or the integrated structure shall be determined by engineering analysis or by suitable load tests to simulate the actual loads and conditions of application that occur.”*
- 1.11.3 *“The design stresses of all materials shall conform to accepted engineering practice.”*



- 1.12 **Approval by US, Local and State Jurisdictions in General:** In all other local and state jurisdictions, the adopted building code legislation states in pertinent part that:
- 1.12.1 For new materials that are not specifically provided for in this code, the design strengths and permissible stresses shall be established by tests.⁴⁴
 - 1.12.2 For innovative alternatives and/or methods of construction, the building official shall accept duly authenticated reports from approved agencies with respect to the quality and manner of use of new materials or assemblies.⁴⁵
 - 1.12.2.1 An approved agency is “*approved*” when it is ANAB ISO/IEC 17065 accredited. DrJ Engineering, LLC (DrJ) is in the ANAB directory.
 - 1.12.2.2 An approved source is “*approved*” when an RDP is properly licensed to transact engineering commerce. The regulatory authority governing approved sources is the state legislature via its professional engineering regulations.⁴⁶
 - 1.12.3 The design strengths and permissible stresses of any structural material...shall conform to the specifications and methods of design of accepted engineering practice performed by an approved source.⁴⁷
- 1.13 **Approval by International Jurisdictions:** The USMCA and GATT agreements provide for approval of innovative materials, designs, services and/or methods of construction through the Agreement on Technical Barriers to Trade and the IAF Multilateral Recognition Arrangement (MLA), where these agreements:
- 1.13.1 State that conformity assessment procedures (i.e., ISO/IEC 17020, 17025, 17065, etc.) are prepared, adopted and applied so as to grant access for suppliers of like products originating in the territories of other Members under conditions no less favourable than those accorded to suppliers of like products of national origin or originating in any other country, in a comparable situation.
 - 1.13.2 **Approved:** The purpose of the MLA is to ensure mutual recognition of accredited certification and validation/verification statements between signatories to the MLA and subsequently, acceptance of accredited certification and validation/verification statements in many markets based on one accreditation for the timely approval of innovative materials, designs, services and/or methods of construction.
 - 1.13.3 ANAB is an IAF-MLA signatory where recognition of certificates, validation and verification statements issued by conformity assessment bodies accredited by all other signatories of the IAF MLA, with the appropriate scope, shall be approved.⁴⁸
 - 1.13.4 Therefore, all ANAB ISO/IEC 17065 Duly Authenticated Reports are approval equivalent.⁴⁹
- 1.14 Approval equity is a fundamental commercial and legal principle.⁵⁰



Notes

For more information, visit www.drjcertification.org or call us at 608-310-6748.

<https://up.codes/viewer/wyoming/ibc-2021/chapter/17/special-inspections-and-tests#1702>

Alternative Materials, Design and Methods of Construction and Equipment: The provisions of any regulation code are not intended to prevent the installation of any material or to prohibit any design or method of construction not specifically prescribed by a regulation. Please review <https://www.justice.gov/atr/mission-and>
<https://up.codes/viewer/colorado/ibc-2021/chapter/1/scope-and-administration#104.11>

<https://up.codes/viewer/wyoming/ibc-2021/chapter/17/special-inspections-and-tests#1706>:~:text=the%20design%20strengths%20and%20permissible%20stresses%20shall%20be%20established%20by%20tests%20as

The design strengths and permissible stresses of any structural material shall conform to the specifications and methods of design of accepted engineering practice.

<https://up.codes/viewer/wyoming/ibc-2021/chapter/17/special-inspections-and-tests#1706>:~:text=shall%20conform%20to%20the%20specifications%20and%20methods%20of%20design%20of%20accepted%20engineering%20practice

<https://up.codes/viewer/wyoming/ibc-2021/chapter/17/special-inspections-and-tests#1707.1>:~:text=the%20building%20official%20shall%20accept%20duly%20authenticated%20reports%20from%20approved%20agencies

<https://up.codes/viewer/wyoming/ibc-2021/chapter/17/special-inspections-and-tests#1703.4.2>

https://up.codes/viewer/wyoming/ibc-2021/chapter/2/definitions#approved_agency

https://up.codes/viewer/wyoming/ibc-2021/chapter/2/definitions#approved_source

<https://www.law.cornell.edu/uscode/text/18/1832> (b) Any organization that commits any offense described in subsection (a) shall be fined not more than the greater of \$5,000,000 or 3 times the value of the stolen trade secret to the organization, including expenses for research and design and other costs of reproducing the trade secret that the organization has thereby avoided. The federal government and each state have a public records act. To follow DTSA and comply state public records and trade secret legislation requires approval through ANAB ISO/IEC 17065 accredited certification bodies or approved sources. For more information, please review this website: [Intellectual Property and Trade Secrets](#).

<https://www.nspe.org/resources/issues-and-advocacy/professional-policies-and-position-statements/regulation-professional> AND <https://apassociation.org/list-of-engineering-boards-in-each-state-archive/>

<https://www.cbiteest.com/accreditation/>

<https://up.codes/viewer/colorado/ibc-2021/chapter/1/scope-and-administration#104>:~:text=to%20enforce%20the%20provisions%20of%20this%20code

<https://up.codes/viewer/colorado/ibc-2021/chapter/1/scope-and-administration#104.11>:~:text=Where%20the%20alternative%20material%2C%20design%20or%20method%20of%20construction%20is%20not%20approved%2C%20the%20building%20official%20shall%20respond%20in%20writing%2C%20stating%20the%20reasons%20why%20the%20alternative%20was%20not%20approved AND

<https://up.codes/viewer/colorado/ibc-2021/chapter/1/scope-and-administration#105.3.1>:~:text=If%20the%20application%20or%20the%20construction%20documents%20do%20not%20conform%20to%20the%20requirements%20of%20pertinent%20laws%2C%20the%20building%20official%20shall%20reject%20such%20application%20in%20writing%2C%20stating%20the%20reasons%20therefore

<https://up.codes/viewer/colorado/ibc-2021/chapter/17/special-inspections-and-tests#1707.1>:~:text=the%20building%20official%20shall%20accept%20duly%20authenticated%20reports%20from%20approved%20agencies%20in%20respect%20to%20the%20quality%20and%20manner%20of%20use%20of%20new%20materials%20or%20assemblies%20as%20provided%20for%20in%20Section%20104.11

<https://iaf.nu/en/about-iaf-mia/#>:~:text=it%20is%20required%20to%20recognise%20certificates%20and%20validation%20and%20verification%20statements%20issued%20by%20conformity%20assessment%20bodies%20accredited%20by%20an%20other%20signatories%20of%20the%20IAF%20MLA%2C%20with%20the%20appropriate%20scope

True for all ANAB accredited product evaluation agencies and all International Trade Agreements.

<https://www.justice.gov/crt/deprivation-rights-under-color-law> AND <https://www.justice.gov/atr/mission>

Unless otherwise noted, all references in this Listing are from the 2021 version of the codes and the standards referenced therein. This material, product, design, service and/or method of construction also complies with the 2000-2021 versions of the referenced codes and the standards referenced therein.

<https://www.ecfr.gov/current/title-24/subtitle-B/chapter-XX/part-3280#p-3280.2> (Listed%20or%20certified); <https://up.codes/viewer/colorado/ibc-2021/chapter/2/definitions#listed> AND <https://up.codes/viewer/colorado/ibc-2021/chapter/2/definitions#labeled>

<https://up.codes/viewer/colorado/ibc-2021/chapter/17/special-inspections-and-tests#1703.4>

<https://www.ecfr.gov/current/title-24/subtitle-B/chapter-XX/part-3280#>:~:text=All%20construction%20methods%20shall%20be%20in%20conformance%20with%20accepted%20engineering%20practices%20to%20insure%20durable%2C%20livable%2C%20and%20safe%20housing%20and%20shall%20demonstrate%20acceptable%20workmanship%20reflecting%20journeyman%20quality%20of%20work%20of%20the%20various%20trades

<https://www.ecfr.gov/current/title-24/subtitle-B/chapter-XX/part-3280#>:~:text=The%20strength%20and%20rigidity%20of%20the%20component%20parts%20and/or%20the%20integrated%20structure%20shall%20be%20determined%20by%20engineering%20analysis%20or%20by%20suitable%20load%20tests%20to%20simulate%20the%20actual%20loads%20and%20conditions%20of%20application%20that%20occur

See Code of Federal Regulations (CFR) Title 24 Subtitle B Chapter XX Part 3280 for definition.

[2018 IFC Section 104.9](#)

Approved is an adjective that modifies the noun after it. For example, Approved Agency means that the Agency is accepted officially as being suitable in a particular situation. This example conforms to IBC/IRC/IFC Section 201.4 where the building code authorizes sentences to have an ordinarily accepted meaning such as the context implies.

<https://up.codes/viewer/wyoming/ibc-2021/chapter/17/special-inspections-and-tests#1707.1>

Multilateral approval is true for all ANAB accredited product evaluation agencies and all International Trade Agreements.

<http://www.drjengineering.org/AppendixC> AND <https://www.drjcertification.org/cornell-2016-protection-trade-secrets>

<https://www.law.cornell.edu/uscode/text/18/1832#>:~:text=imprisoned%20not%20more%20than%2010%20years

<https://www.law.cornell.edu/uscode/text/18/1832#>:~:text=Any%20organization%20that%20has%20thereby%20avoided



<https://up.codes/viewer/wyoming/ibc-2021/chapter/17/special-inspections-and-tests#1706.2>

IBC 2021, Section 1706.1 Conformance to Standards

IBC 2021, Section 1707 Alternative Test Procedure, 1707.1 General

See Section 10 for the distilled building code definition of **Approved**

Los Angeles Municipal Code, SEC. 98.0503. TESTING AGENCIES

<https://up.codes/viewer/california/ca-building-code-2022/chapter/17/special-inspections-and-tests#1707.1>

New York City, The Rules of the City of New York, § 101-07 Approved Agencies

New York City, The Rules of the City of New York, § 101-07 Approved Agencies

<https://up.codes/viewer/new-jersey/ibc-2018/chapter/17/special-inspections-and-tests#1707.1>

<https://www.nj.gov/dca/divisions/codes/codreg/ucc.html>

<https://www.ecfr.gov/current/title-24/subtitle-B/chapter-XX/part-3282/subpart-A/section-3282.14>

<https://www.ecfr.gov/current/title-24/subtitle-B/chapter-XX/part-3280>

IBC 2021, Section 1706 Design Strengths of Materials, 1706.2 New Materials. Adopted law pursuant to IBC model code language 1706.2.

IBC 2021, Section 1707 Alternative Test Procedure, 1707.1 General. Adopted law pursuant to IBC model code language 1707.1.

<https://www.nspe.org/resources/issues-and-advocacy/professional-policies-and-position-statements/regulation-professional> AND <https://apassociation.org/list-of-engineering-boards-in-each-state-archive/>

IBC 2021, Section 1706 Design Strengths of Materials, Section 1706.1 Conformance to Standards Adopted law pursuant to IBC model code language 1706.1.

[https://iaf.nu/en/about-iaf-](https://iaf.nu/en/about-iaf-mla/#:~:text=it%20is%20required%20to%20recognise%20certificates%20and%20validation%20and%20verification%20statements%20issued%20by%20conformity%20assessment%20bodies%20accredited%20by%20all%20other%20signatories%20of%20the%20IAF%20MLA%2C%20with%20the%20appropriate%20scope)

[mla/#:~:text=it%20is%20required%20to%20recognise%20certificates%20and%20validation%20and%20verification%20statements%20issued%20by%20conformity%20assessment%20bodies%20accredited%20by%20all%20other%20signatories%20of%20the%20IAF%20MLA%2C%20with%20the%20appropriate%20scope](https://iaf.nu/en/about-iaf-mla/#:~:text=it%20is%20required%20to%20recognise%20certificates%20and%20validation%20and%20verification%20statements%20issued%20by%20conformity%20assessment%20bodies%20accredited%20by%20all%20other%20signatories%20of%20the%20IAF%20MLA%2C%20with%20the%20appropriate%20scope)

True for all ANAB accredited product evaluation agencies and all International Trade Agreements.

<https://www.justice.gov/crt/deprivation-rights-under-color-law> AND <https://www.justice.gov/atr/mission>