



Technical Evaluation Report™ - Canada

A Duly Authenticated Report from an Approved Agency

Report No: 1706-02



Issue Date: July 13, 2017

Revision Date: November 24, 2026

Subject to Renewal: January 1, 2027

BASF HP+™ Wall XR Series - Ontario

Trade Secret Report Holder:

BASF Corporation

100 Park Ave
Florham Park, NJ 07932-1089

Phone: 973-245-6000

Website: walltite.basf.ca/home/hp-xr

CSI Designations:

DIVISION: 06 00 00 - WOOD, PLASTICS AND COMPOSITES

Section: 06 12 00 - Structural Panels

Section: 06 12 19 - Shear Wall Panels

Section: 06 16 00 - Sheathing

DIVISION: 07 00 00 - THERMAL AND MOISTURE PROTECTION

Section: 07 21 00 - Thermal Insulation

Section: 07 25 00 - Water-Resistive Barriers/Weather Barriers

1 Innovative Product Evaluated¹

1.1 BASF HP+ Wall XR Series Utilizing WALLTITE v.5 SPF in Combination with Neopor FPIS and Horizontal Girts

2 Product Description and Materials

2.1 The innovative product evaluated in this report is shown in **Figure 1**.

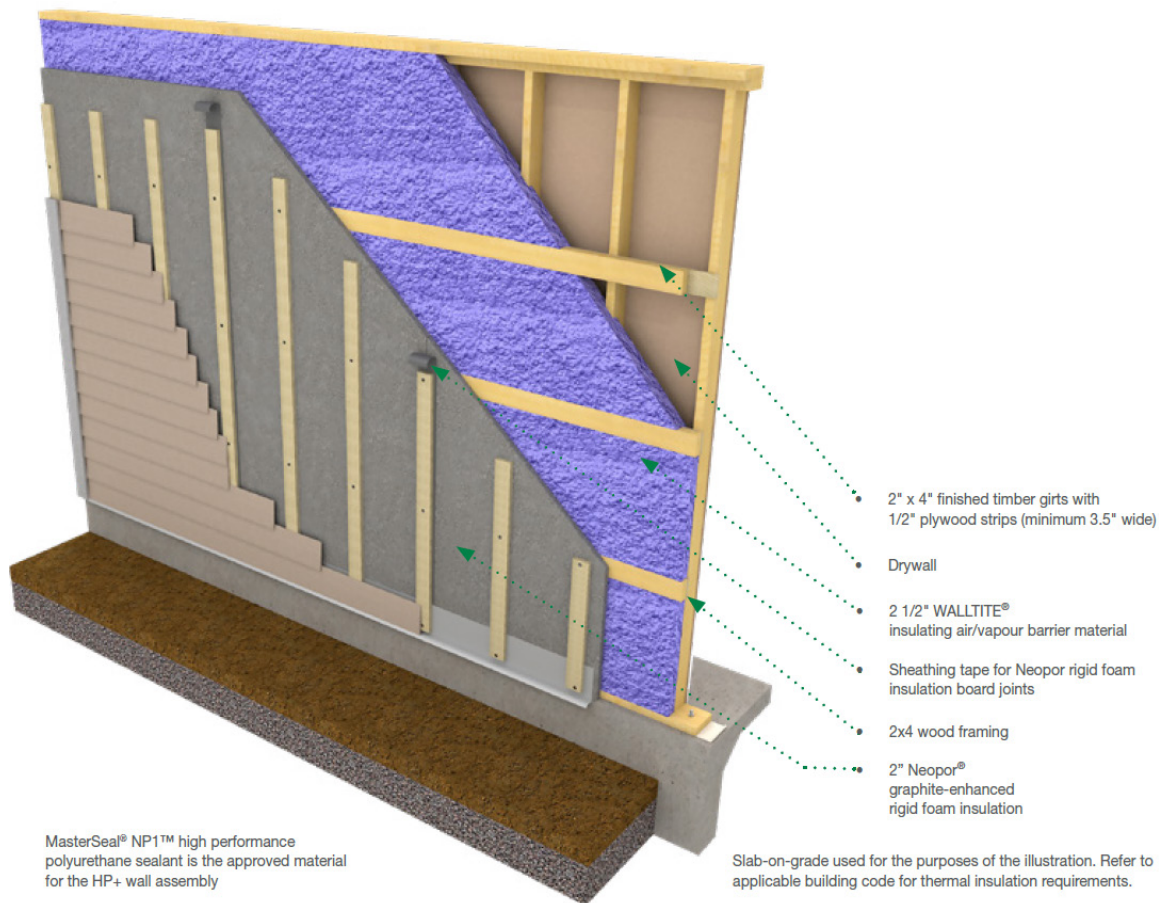


Figure 1. Illustration of BASF HP+ Wall XR Series

- 2.2 BASF HP+ Wall XR Series is a proprietary wall system consisting of WALLTITE v.5 Spray Polyurethane Foam (SPF) combined with Neopor Foam Plastic Insulating Sheathing (FPIS), and horizontal Z-Bar girts (or hat channel furring, also called Omega bar) installed on wood studs.
- 2.2.1 BASF HP+ Wall XR Series described in this report contains a combination of the following materials:
- 2.2.1.1 *Spray Polyurethane Foam (SPF):*
- 2.2.1.1.1 WALLTITE v.5 SPF - 38 mm
- 2.2.1.2 *Neopor FPIS:*
- 2.2.1.2.1 Minimum thickness: 25 mm or 51 mm.
- 2.2.1.2.2 Field: fastened with minimum No. 7 screw with plastic cap spaced at 300 mm o.c. into horizontal Z-Bar girts.
- 2.2.1.2.3 Top and bottom of each panel: fastened with 3.3 mm x 89 mm nails at 150 mm o.c., directly into the 2 x 6 plates (See **Section 2.2.1.4.2**).



2.2.1.3 Horizontal Z-Bar Girts:

2.2.1.3.1 51 mm x 51 mm, galvanized G60 (0.60 oz/square foot), 20-gauge, at 600 mm o.c.

2.2.1.3.2 Fastened to framing with one of the following:

2.2.1.3.2.1 Minimum 3.3 mm x 63 mm ring-shank nail

2.2.1.3.2.2 Minimum No. 8, 4.2 mm x 50 mm wood screw

2.2.1.3.3 Two fasteners per stud.

2.2.1.4 Nominal 2x Wood Framing:

2.2.1.4.1 2 x 4 studs (38 x 89 mm), Stud-grade SPF or better.

2.2.1.4.1.1 Each stud fastened to top and bottom plates with three (3) 3.3 mm x 83 mm nails.

2.2.1.4.2 2 x 6 top (single or double) and bottom plates – No. 2 SPF or better.

2.2.2 The following may be used as an alternative to **Section 2.2.1.3**:

2.2.2.1 Hat-channel furring (also called Omega bar) up to 51 mm in depth, galvanized G60, 20-gauge, at 600 mm o.c.

2.2.2.1.1 Each side of channel fastened to framing with one of the following:

2.2.2.1.1.1 Minimum 3.3 mm x 63 mm ring-shank nail

2.2.2.1.1.2 Minimum No. 8, 4.2 mm x 51 mm wood screw

2.2.2.1.2 Two fasteners per stud.

2.2.2.2 With rough-cut or sawn wood studs measuring 44 mm x 95 mm, rough cut or sawn wood timber girts measuring 44 mm x 95 mm at 600 mm o.c. may be fastened horizontally to studs with two 3.3 mm x 83 mm nails at each stud / girt intersection. Total thickness of the stud (89 mm) and girt (44 mm) is 133 mm.

2.2.2.3 With nominal 2 x 4 studs (38 x 89 mm), rough-cut or sawn wood timber girts measuring a full 51 mm x 102 mm at 600 mm o.c. may be fastened horizontally to studs with two 3.3 mm x 82.5 mm nails at each stud / girt intersection. Total thickness of the stud (89 mm) and girt (38 mm) is 127 mm.

2.2.2.4 Nominal 2 x 4 (38 x 89 mm) finished timber girts may be installed horizontally at 600 mm o.c. with 12.7 mm plywood strips (minimum 89 mm wide) fastened to framing with two 3.3 mm x 83 mm nails at each stud/girt intersection. Total thickness of the stud (89 mm) and girt (51 mm) is 140 mm.

2.3 As needed, review material properties for design in **Section 4** and the regulatory evaluation in **Section 5**.

3 Applicable Codes and Standards²

3.1 Codes

3.1.1 *NBC—10, 15, 20: National Building Code of Canada*

3.1.2 *NECB—17, 20: National Energy Code of Canada for Buildings*

3.1.3 *O Reg. 163/24: Ontario Building Code (OBC)*³

3.2 Standards and Referenced Documents

3.2.1 *ASTM C518: Standard Test Method for Steady-State Thermal Transmission Properties by Means of the Heat Flow Meter Apparatus*

3.2.2 *ASTM D1622: Standard Test Method for Apparent Density of Rigid Cellular Plastics*

3.2.3 *ASTM D1623: Standard Test Method for Tensile and Tensile Adhesion Properties of Rigid Cellular Plastics*

3.2.4 *ASTM D2126: Standard Test Method for Response of Rigid Cellular Plastics to Thermal and Humid Aging*



- 3.2.5 *ASTM D2842: Standard Test Method for Water Absorption of Rigid Cellular Plastics*
- 3.2.6 *ASTM D6226: Standard Test Method for Open Cell Content of Rigid Cellular Plastics*
- 3.2.7 *ASTM E72: Standard Test Methods of Conducting Strength Tests of Panels for Building Construction*
- 3.2.8 *ASTM E330: Standard Test Method for Structural Performance of Exterior Windows, Doors, Skylights and Curtain Walls by Uniform Static Air Pressure Difference*
- 3.2.9 *ASTM E2126: Standard Test Methods for Cyclic (Reversed) Load Test for Shear Resistance of Vertical Elements of the Lateral Force Resisting Systems for Buildings*
- 3.2.10 *ASTM E2178: Standard Test Method for Air Permeance of Building Materials*
- 3.2.11 *CAN/ULC-S102.2: Test for Surface Burning Characteristics of Flooring, Floor Coverings, and Miscellaneous Materials and Assemblies*
- 3.2.12 *CAN/ULC-S102: Standard Method of Test for Surface Burning Characteristics of building Materials and Assemblies*
- 3.2.13 *CAN/ULC-S127: Standard Corner Wall Method of Test for Flammability Characteristics of Non-Melting Building Materials*
- 3.2.14 *CAN/ULC-S701: Standard for Thermal Insulation, Polystyrene, Boards and Pipe Covering*
- 3.2.15 *CAN/ULC-S705.1: Standard for Thermal Insulation - Spray Applied Rigid Polyurethane Foam, Medium Density - Material Specification*
- 3.2.16 *CAN/ULC-S705.2: Standard for Thermal Insulation - Spray Applied Rigid Polyurethane Foam, Medium Density - Application*
- 3.2.17 *CSA O86-19: Engineering Design in Wood*
- 3.2.18 *CWC: Engineering Guide for Wood Frame Construction 2020 Edition*

4 Tabulated Properties Generated from Nationally Recognized Standards

- 4.1 BASF HP+ Wall XR Series is used in buildings constructed in accordance with OBC Division B Section 9.23 for wood frame construction. BASF HP+ Wall XR Series is used to provide:
 - 4.1.1 Lateral-load resistance (wind and seismic) for braced BASF HP+ Wall XR Series panels used in wood frame construction.
 - 4.1.2 Transverse-load resistance for braced BASF HP+ Wall XR Series panels used in wood frame construction.
 - 4.1.3 Resistance to uplift and gravity loads in single top-plate applications for BASF HP+ Wall XR Series assemblies used in wood frame construction in accordance with OBC Division B Article 9.23.11.3.
- 4.2 BASF HP+ Wall XR Series is used to provide thermal resistance in the exterior wall of the building thermal envelope in accordance with OBC Division B Part 5 and Subsection 9.25.2.
- 4.3 BASF HP+ Wall XR Series is used to provide resistance to air leakage in the exterior wall of the building envelope in accordance with OBC Division B Section 5.4 and Subsection 9.25.3.
- 4.4 BASF HP+ Wall XR Series may be used in buildings designed in accordance with OBC Division B Section 4.1 Structural Loads and Procedures or the Engineering Guide for Wood Frame Construction.
- 4.5 *Structural Applications*
 - 4.5.1 Except as otherwise described in this report BASF HP+ Wall XR Series shall be installed in accordance with the applicable building codes listed in **Section 3**, using the provisions set forth herein for the design and installation of Wood Structural Panels (WSP) and this report.
 - 4.5.2 BASF HP+ Wall XR Series is permitted to be installed in accordance with OBC Division B Part 9 Article 9.23.10.2 for the design of Bracing and Lateral Support systems using the methods and conditions set forth therein for the attachment of gypsum board per Subsection 9.29.5.



- 4.5.3 Anchorage for in-plane shear shall be provided to transfer the induced shear force into and out of each shear wall in accordance with OSB Division B Subsection 9.23.6.
- 4.5.4 The maximum aspect ratio for full-height BASF HP+ Wall XR Series braced wall segments shall be 4:1.
- 4.5.5 The minimum full-height panel width shall be 600 mm. Panels may be installed vertically or horizontally.
- 4.5.6 Neopor panel top and bottom edges shall be attached to the top and bottom plates of a minimum width of 38 mm. Abutting panel edges shall be generally centered on the framing member.
- 4.5.7 Installation is permitted for single top-plate or double top-plate applications in accordance with OBC Division B Article 9.23.11.3 where concentrated loads from ceilings, floors, and roofs are not more than 50 mm to one side of the studs.
- 4.5.8 Where the application exceeds the limitations set forth herein, design shall be permitted in accordance with accepted engineering procedures, experience, and technical judgment.
- 4.6 *Acceptable Solutions in Accordance with OBC Division B Part 9 Bracing Applications*
 - 4.6.1 Where a building, or portion thereof, does not comply with one or more of the bracing requirements within the acceptable solutions of OBC Part 9, those portions shall be designed and constructed in accordance with OBC Division B Part 4 Structural Design or with the Engineering Guide for Wood Frame Construction using the design values in **Table 1**.

Table 1. Shear Resistance (Limit States Design) for BASF HP+ Wall XR Series – Wind or Seismic^{1,2,3,4,5,6}

Wall Assembly	Type of Girt	Maximum Stud Spacing (mm)	Interior Gypsum Wallboard Minimum Thickness (mm)	Maximum Gypsum Board Fastener Spacing (edge/field) (mm)	Specified Shear Strength, kN/m	Ductility Factor, $R_d^{4,5}$	Overstrength Factor, R_o
BASF HP+ Wall XR Series with 51 mm Neopor + 76 mm SPF	Z-Bar or Hat Channel	400	None	-	6.67	2.0	1.7
BASF HP+ Wall XR Series with 51 mm Neopor + 63 mm SPF		400	12.7	300/300	6.88	3.0	1.7
BASF HP+ Wall XR Series with 51 mm Neopor + 76 mm SPF		400	12.7	300/300	6.95	3.0	1.7
BASF HP+ Wall XR Series with 29 mm Neopor + 63 mm SPF		400	12.7	300/300	6.26	3.0	1.7
BASF HP+ Wall XR Series with 25 mm Neopor + 63 mm SPF		400	12.7	300/300	6.16	3.0	1.7
BASF HP+ Wall XR Series with 51 mm Neopor + 63 mm SPF		600	None	-	5.71	2.0	1.7
BASF HP+ Wall XR Series with 51 mm Neopor + 63 mm SPF		600	12.7	300/300	6.61	2.5	1.7
BASF HP+ Wall XR Series with 51 mm Neopor + 51 mm SPF		400	None	-	6.67	2.5	1.7
BASF HP+ Wall XR Series with 51 mm Neopor + 51 mm SPF	Timber ⁷	400	None	-	6.88	1.5	1.7

Imperial Units: 1 mm = 0.039 in, 1 kN/m = 68.52 lb/ft

- BASF HP+ Wall XR Series fastening per **Section 2.2** and **Section 6**.
- Interior gypsum wallboard attached to framing with minimum 2.14 mm (0.086") nail or #6 Type W screw fasteners. Minimum penetration of nails or screws into framing is 19 mm. Fastener spacing shall be as required above.
- Building Height Limitations:
 - $I_e F_a S_a(0.2) < 0.2$ – No Limit
 - $0.2 \leq I_e F_a S_a(0.2) < 0.35$ – No Limit
 - $I_e F_a S_a(0.2) \geq 0.35$ – 20 m
 - $I_e F_a S_a(1.0) > 0.3$ – 20 m
- Response modification coefficient, R_d , for use throughout the OBC
- For combinations of different types of SFRS acting in the same direction in the same storey, $R_d R_o$ shall be taken as the lowest value of $R_d R_o$ corresponding to these systems. See OBC Division B Article 4.1.8.9.
- Heights are maximum height limits above grade, as defined in OBC Division B Table 4.1.8.9.
- See **Section 2.2.2.2** through **Section 2.2.2.4**.

4.7 Axial Loading

- 4.7.1 BASF HP+ Wall XR Series will perform the same as corresponding equivalent prescriptive wall assemblies.
- 4.7.2 Designs shall have a load path capable of transferring loads from their point of origin to their final point of resistance.



4.8 Transverse Wind Loading

- 4.8.1 BASF HP+ Wall XR Series installed over exterior framing spaced a maximum of 600 mm o.c. without an interior covering can resist specified wind loads as shown in **Table 2**.

Table 2. Specified Wind Pressure^{1,2}

Wall Assembly	Maximum Stud Spacing (mm)	Hourly 1-in-50 Wind Pressure, kPa
BASF HP+ Wall XR Series with 38 mm (1½") SPF + 29 mm (1⅛") Neopor	600 o.c.	3.1
Imperial Units: 1 mm = 0.039 in, 1 kPa = 20.88 psf 1. Neopor attached to Z-Bar girt at 300 mm o.c. and to top and bottom plates with 3.3 mm (0.131") x 89 mm nail at 150 mm o.c. The attachment of the sheathing to the framing is primarily through the adhesion of the SPF to the framing and Neopor sheathing. 2. Hourly Wind Pressure (1-in-50) for selected locations can be found in NBC Division B, Appendix C, Table C-2.		

4.9 Thermal Resistance

- 4.9.1 BASF HP+ Wall XR Series components have thermal resistance as shown on **Table 3**.

Table 3. Thermal Resistance Properties

Product	Thickness (mm)	RSI/R-Value, m²·K/W (ft²·hr·°F/Btu)
Neopor	25.4	0.83 (4.7)
	51	1.66 (9.4)
WALLTITE v.5	38	1.48 (8.4)
Imperial Units: 1 mm = 0.039 in, 1 m²·K/W = 5.678 hr·ft²·°F/Btu		

4.10 Air Barrier

- 4.10.1 BASF HP+ Wall XR Series components have the air-permeance properties shown in **Table 4** in accordance with OBC Division B Article 5.4.1.2 and Subsection 9.25.3.

Table 4. Air-Barrier Properties¹

Product	Air Permeance [L/(s·m²)]
WALLTITE v.5	≤ 0.02
Imperial Units: 1 L/(s·m²) = 0.2 cfm/ft² 1. Tested in accordance with ASTM E2178.	

4.11 Surface Burning Characteristics

- 4.11.1 BASF HP+ Wall XR Series panels have surface-burning characteristics (flame spread) shown in **Table 5**.

Table 5. Flame Spread Characteristics¹

Product	Flame Spread Rating
WALLTITE v.5	≤ 500
1. Tested in accordance with CAN/ULC-S102 including CAN/ULC-S127	



4.12 Thermal-Barrier Requirements

- 4.12.1 Foam plastics that form part of a wall or ceiling assembly in combustible construction shall be protected from adjacent spaces in the building, other than adjacent concealed spaces within attic or roof spaces, crawl spaces and wall assemblies, by an approved thermal barrier as required by OBC Division B Article 3.1.4.2 and Article 9.10.17.10.
- 4.13 Where the application falls outside of the performance evaluation, conditions of use, and/or installation requirements set forth herein, alternative techniques shall be permitted in accordance with accepted engineering practice and experience. This includes but is not limited to the following areas of engineering: mechanics or materials, structural, building science, and fire science.

5 Regulatory Evaluation and Accepted Engineering Practice

- 5.1 BASF HP+ Wall XR Series complies with the following adopted codes and/or accepted engineering practice for the following reasons:
 - 5.1.1 Structural performance under lateral-load conditions in accordance with the following:
 - 5.1.1.1 OBC Division B Article 9.23.10.2 Bracing and Lateral Support.
 - 5.1.1.2 OBC Part 4 Structural Design and the Engineering Guide for Wood Frame Construction.
 - 5.1.2 Structural performance under uplift and gravity loads for use with single top plates in accordance with OBC Division B Article 9.23.11.3.
 - 5.1.3 Structural performance under transverse-load conditions for use to resist factored external wind loads determined in accordance with OBC Division B Article 5.2.2.2.
 - 5.1.4 Continuous insulated sheathing requirements complying with the provisions OBC Division B Part 5 and Subsection 9.25.2.
 - 5.1.5 Performance for use as a component of the air barrier in accordance with OBC Division B Section 5.4 and Subsection 9.25.3.
 - 5.1.6 Flame-spread rating and smoke-developed classification complying with the provisions of OBC Division B Subsection 3.1.12 and Article 9.10.3.2.
- 5.2 Performance of BASF HP+ Wall XR Series or any of its component materials for use as a Water-Resistive Barrier (WRB) assembly or WRB material is outside the scope of this report.
- 5.3 Performance of BASF HP+ Wall XR Series or any of its component materials as used in the normal construction process is outside the scope of this report.
 - 5.3.1 This includes storage, weather conditions, durability considerations, handling, installing, restraining, and bracing of BASF HP+ Wall XR Series through the shipping, storing, and construction means and methods process.
- 5.4 Use of BASF HP+ Wall XR Series in a portal frame is outside the scope of this report.
- 5.5 Any engineering evaluation conducted for this report was performed on the dates provided in this report and within DrJ's professional scope of work.
- 5.6 Kevin Below, P. Eng., has collaborated with DrJ through the review of this report.
- 5.7 Any building code, regulation and/or accepted engineering evaluations (i.e., research reports, duly authenticated reports, etc.) that are conducted for this report were performed by DrJ, which is an ISO/IEC 17065 accredited certification body and a professional engineering company operated by RDP or approved sources. DrJ is qualified⁴ to practice product and regulatory compliance services within its scope of accreditation and engineering expertise,⁵ respectively.
- 5.8 Testing and related engineering evaluations are defined as intellectual property and/or trade secrets.⁶



- 5.9 Engineering evaluations are conducted with DrJ's ANAB accredited ICS code scope of expertise that is also its areas of professional engineering competence.⁷
- 5.10 Any code specific issues not addressed in this section are outside the scope of this report.

6 Installation

- 6.1 Installation shall comply with the approved construction documents, the manufacturer installation instructions, this report, and the applicable building code.
- 6.2 In the event of a conflict between the manufacturer installation instructions and this report, contact the manufacturer for counsel on the proper installation method.
- 6.3 WALLTITE v.5 SPF must be installed in accordance with standard CAN/ULC-S705.2, ULC Evaluation Report ER41037, and BASF Canada's Quality Assurance and Training Program (QATP) manual by installers licensed through the QATP and certified by Caliber Quality Solutions.
- 6.4 A copy of the manufacturer published installation instructions shall be available at all times on the jobsite during installation.
- 6.5 BASF HP+ Wall XR Series Z-Bar girts or hat-channel furring (also called Omega bars) must be installed over studs, with framing that has a thickness of not less than 38 mm and spaced at a maximum of 600 mm o.c.
- 6.6 Where gypsum wallboard is required, the gypsum wallboard shall have a minimum thickness of 12.7 mm.
- 6.7 *Orientation*
- 6.7.1 BASF HP+ Wall XR Series sheathing panels must be installed vertically with the length dimension of the panels parallel to the framing behind and perpendicular to the Z-Bar girts or hat-channel furring (also called Omega bar).
- 6.8 *Fasteners*
- 6.8.1 *Neopor:*
- 6.8.1.1 No. 7 (0.151" dia.) screws with plastic cap. Screw must be long enough to penetrate Neopor sheathing and Z-Bar girt or hat-channel furring, plus three threads.
- 6.8.1.2 Top/Bottom (at the 2 x 6 plates): 3.3 mm x 89 mm nail and a minimum penetration of 38 mm into framing.
- 6.8.2 *Z-Bar Girt or Hat-Channel Furring:*
- 6.8.2.1 Minimum 3.3 mm (0.131") x 63 mm ring-shank nail.
- 6.8.2.2 Minimum No. 8 (0.164") x 51 mm wood screw.
- 6.8.2.3 Two fasteners into each framing member.
- 6.8.3 *Rough-Cut Timber:*
- 6.8.3.1 As an alternative to **Section 6.5**, 44 x 95 mm rough-cut timber girts at 600 mm o.c., fastened to framing.
- 6.8.4 *Full-Size Rough-Cut Timber:*
- 6.8.4.1 As an alternative to **Section 6.5**, 51 x 102 mm rough-cut timber girts at 600 mm o.c., fastened to framing.
- 6.8.5 *Finished Timber:*
- 6.8.5.1 As an alternative to **Section 6.5**, 38 mm x 89 mm timber girts installed horizontally at 600 mm o.c. with 12.7 mm plywood strips (minimum 89 mm wide), fastened to framing.



6.8.6 Gypsum Wallboard:

- 6.8.6.1 Where gypsum wallboard is required, it shall be installed in accordance with OBC Division B Subsection 9.29.5, except No. 6 x 32 mm Type W or S wood screw or equivalent is permitted where a fire-resistance rating is not required.

6.9 Fastener Spacing

6.9.1 BASF HP+ Wall XR Series (Neopor Sheathing):

- 6.9.1.1 Maximum of 150 mm o.c. along edges and 300 mm o.c. in the field.

6.9.2 Z-Bar Girts or Hat-Channel Furring (Also Called Omega Bars):

- 6.9.2.1 Two fasteners into each framing member.

6.9.3 Gypsum Wallboard:

- 6.9.3.1 For OBC Division B Part 9 applications, gypsum nail fasteners shall be spaced at a maximum of 200 mm o.c. all vertical wall supports and top and bottom plates .
- 6.9.3.2 For OBC Division B Part 9 applications, gypsum screw fasteners shall be spaced a maximum of 300 mm o.c. on all vertical wall supports and top and bottom plates.
- 6.9.3.3 For engineered design, see **Table 1**.

6.10 Fastener Edge Distance

- 6.10.1 For OBC Division B Part 9 applications, fastener edge distance is a minimum of 10 mm for both BASF HP+ Wall XR Series and gypsum wallboard.

6.11 Neopor Attachment with Furring Installed on the Exterior Side

- 6.11.1 Install the plastic cap screws at the corners of each Neopor panel only, then install minimum 19 mm x 63 mm (nominal 1" x 3") wood furring using a screw going through the furring strip, through the Neopor and finally into the hat furring or Z-Bar. The wood furring and its connection shall be designed to support the cladding weight and transfer any required loads to the framing members.

7 Substantiating Data

- 7.1 Testing has been performed under the supervision of a professional engineer and/or under the requirements of ISO/IEC 17025 as follows:

- 7.1.1 Lateral load testing in accordance with ASTM E2126 conducted by Center for Building Innovation (CBI)
- 7.1.2 Transverse wind load testing in accordance with ASTM E330 conducted by CBI
- 7.1.3 Uplift load testing in accordance with ASTM E72 conducted by CBI
- 7.1.4 Gravity load testing for single-top-plate applications in accordance with ASTM E72 conducted by CBI
- 7.1.5 Neopor surface burning testing in accordance with CAN/ULC-S102.2 conducted by UL of Canada
- 7.1.6 WALLTITE surface burning testing in accordance with CAN/ULC-S102 conducted by Element Canada
- 7.1.7 Neopor material property testing in accordance with CAN/ULC-S701 conducted by QAI Laboratories
- 7.1.8 WALLTITE material property testing in accordance with CAN/ULC-S705.1 conducted by Element Canada
- 7.1.9 WALLTITE v.5 product listing per ULC ER41037

- 7.2 Information contained herein is the result of testing and/or data analysis by sources that conform to the evaluation requirements of NBC Volume 1 Relationship of the NBC to Standards Development and Conformity Assessment and/or professional engineering regulations. DrJ relies upon accurate data to perform its ISO/IEC 17065 evaluations.



- 7.3 Where appropriate, DrJ's analysis is based on provisions that have been codified into law through provincial, territorial, or local adoption of codes and standards. The developers of these codes and standards are responsible for the reliability of published content. DrJ analysis may use code-adopted provisions as a control sample. A control sample versus a test sample establishes a product as being equivalent to that prescribed in this code in quality, strength, effectiveness, fire resistance, durability and safety.
- 7.4 The accuracy of the provisions provided herein may be reliant upon the published properties of raw materials, which are defined by the grade mark, grade stamp, mill certificate, listings, certified reports, duly authenticated reports from approved agencies, and research reports prepared by approved agencies and/or approved sources provided by the suppliers of products, materials, designs, assemblies and/or methods of construction. These are presumed to be minimum properties and relied upon to be accurate. The reliability of DrJ's engineering practice, as contained in this report, may be dependent upon published design properties by others.
- 7.5 *Testing and Engineering Analysis*
- 7.5.1 The strength, rigidity and/or general performance of component parts and/or the integrated structure are determined by suitable tests that simulate the actual conditions of application that occur and/or by accepted engineering practice and experience.
- 7.6 Where additional condition of use and/or code compliance information is required, please search for BASF HP+ Wall XR Series on the [DrJ Certification website](#).

8 Findings

- 8.1 As outlined in **Section 4**, BASF HP+ Wall XR Series has performance characteristics that were tested and/or meet applicable regulations. In addition, they are suitable for use pursuant to its specified purpose.
- 8.2 When used and installed in accordance with this duly authenticated report and the manufacturer installation instructions, BASF HP+ Wall XR Series shall be approved for the following applications:
- 8.2.1 Lateral load resistance due to wind and seismic loads carried by shear walls in accordance with **Table 1**
- 8.2.2 Transverse wind load resistance in accordance with **Table 2**
- 8.2.3 Thermal resistance properties in accordance with **Table 3**
- 8.2.4 Air-permeance performance in accordance with **Table 4**
- 8.2.5 Material fire properties in accordance with **Table 5**
- 8.3 Any application specific issues not addressed herein can be engineered by an RDP. Assistance with engineering is available from BASF Corporation.
- 8.4 This innovative product has been evaluated in the context of the codes listed in **Section 3** and is compliant with all known provincial, territorial, and local building codes. Where there are known variations in provincial, territorial, or local codes applicable to this report, they are listed here:
- 8.4.1 No known variations
- 8.5 NBC Volume 1 Relationship of the NBC to Standards Development and Conformity Assessment:

Certification

Certification is the confirmation by an independent organization that a product, service, or system meets a requirement...Certification bodies publish lists of certified products and companies...Several organizations, including the Canadian Construction Materials Centre (CCMC), offer such evaluation services.

Evaluation

An evaluation is a written opinion by an independent professional organization that a product will perform its intended function. An evaluation is very often done to determine the ability of an innovative product, for which no standards exist, to satisfy the intent of the Code requirement...



- 8.6 ISO/IEC 17065 accredited third-party certification bodies,⁸ including but not limited to, Standards Council of Canada (SCC)⁹ and ANSI National Accreditation Board (ANAB),¹⁰ confirm that product certification bodies have the expertise to provide technical evaluation services within their scope of accreditation. All SCC and ANAB product certification bodies meet NBC requirements to offer evaluation services for alternative solutions.¹¹
- 8.6.1 DrJ is an ISO/IEC 17065 ANAB-Accredited Product Certification Body – Accreditation #1131¹² and employs professional engineers.¹³
- 8.7 Through ANAB accreditation and the IAF Multilateral Agreements, this report can be used to obtain product approval in any jurisdiction or country that has IAF MLA Members & Signatories to meet the Purpose of the MLA – “*certified once, accepted everywhere.*” IAF specifically says, “*Once an accreditation body is a signatory of the IAF MLA, it is required to recognise certificates and validation and verification statements issued by conformity assessment bodies accredited by all other signatories of the IAF MLA, with the appropriate scope.*”¹⁴
- 8.8 Product certification organizations, accredited by the SCC and ANAB, are defined as equivalent evaluation services:
- 8.8.1 Canada-United States-Mexico Agreement (CUSMA), Article 11.6 Conformity Assessment confirms mutual recognition by stating, “*...each Party shall accord to conformity assessment bodies located in the territory of another Party treatment no less favorable than that it accords to conformity assessment bodies located in its own territory or in the territory of the other Party.*”
- 8.8.2 The SCC National Conformity Assessment Principles states, “*SCC is a member of a number of international organizations developing voluntary conformity assessment agreements that help ensure the international acceptance of Canadian conformity assessment results. Signatories to these agreements (like SCC) recognize each other’s accreditations as being equivalent to their own.*”¹⁵
- 8.9 Building official approval of a licensed professional engineer is performed by verifying the professional engineer and/or their business entity are listed by the engineering regulators of the relevant jurisdiction.

9 Conditions of Use

- 9.1 Material properties shall not fall outside the boundaries defined in **Section 4**.
- 9.2 As defined in **Section 4**, where material and/or engineering mechanics properties are created for load resisting design purposes, the resistance to the applied load shall not exceed the ability of the defined properties to resist those loads using the principles of accepted engineering practice.
- 9.3 BASF HP+ Wall XR Series loads applied shall not exceed those recommended by the manufacturer as follows:
- 9.3.1 Shear loads shall not exceed values in **Table 1**, as applicable.
- 9.3.2 Axial loads shall not exceed values in **Section 4.7**.
- 9.3.3 Transverse loads shall not exceed values in **Table 2**.
- 9.4 The manufacturer installation instructions shall be available on the jobsite for inspection.
- 9.5 All panel edges shall be supported by wall framing or solid blocking with a minimum width of 38 mm.
- 9.6 When required by regulation and enforced by the building official, also known as the Authority Having Jurisdiction (AHJ) in which the project is to be constructed:
- 9.6.1 Any calculations incorporated into the construction documents shall conform to accepted engineering practice and, when prepared by an approved source, shall be approved when signed and sealed.
- 9.6.2 This report and the installation instructions shall be submitted at the time of permit application.
- 9.6.3 This innovative product has an internal quality control program and a third-party quality assurance program.
- 9.6.4 At a minimum, this innovative product shall be installed per **Section 6** of this report.



- 9.6.5 This report shall be reviewed for code compliance by the AHJ in concert with the duties and powers granted to the building official by the provincial regulations governing such duties and powers.
- 9.6.6 The application of this innovative product in the context of this report is dependent upon the accuracy of the construction documents, implementation of installation instructions, inspections, and any other regulatory requirements that may apply.
- 9.7 Design loads shall be determined in accordance with the building code adopted by the jurisdiction in which the project is to be constructed and/or by the building designer (i.e., owner).
- 9.8 The actual design, suitability, and use of this report for any particular building, is the responsibility of the owner or the authorized agent of the owner.

10 Identification

- 10.1 BASF HP+ Wall XR Series utilizing WALLTITE v.5 SPF in combination with Neopor FPIS and horizontal girts, as listed in **Section 1.1**, is identified by a label on the board or packaging material bearing the manufacturer name, product name, this report number, and other information to confirm code compliance.
- 10.2 Additional technical information can be found at walltite.basf.ca/home/hp-xr.

11 Review Schedule

- 11.1 This report is subject to periodic review and revision. For the latest version, visit www.drjcertification.org.
- 11.2 For information on the status of this report, please contact [DrJ Certification](#).



Notes

- ¹ For more information, visit drjcertification.org or call us at 608-310-6748.
- ² Unless otherwise noted, all references in this report are from the 2020 version of the NBC. This alternative solution is also approved for use with the 2010 and 2015 NBC and the standards referenced therein.
- ³ References in this report to the National Building Code of Canada (NBC) apply to the Ontario Building Code (OBC), unless noted otherwise.
- ⁴ Qualification is performed by a legislatively defined Accreditation Body. ANSI National Accreditation Board (ANAB) is the largest independent accreditation body in North America and provides services in more than 75 countries. DrJ is an ANAB accredited product certification body.
- ⁵ <https://anabpd.ansi.org/Accreditation/product-certification/AllDirectoryDetails?prgID=1&orgID=2125&statusID=4#:~:text=Bill%20Payment%20Date-,Accredited%20Scopes,-13%20ENVIRONMENT.%20HEALTH>
- ⁶ 18 U.S. Code § 1831 - Economic espionage - Whoever, intending or knowing that the offense will benefit any foreign government, foreign instrumentality, or foreign agent, knowingly steals, or without authorization appropriates, takes, carries away, or conceals, or by fraud, artifice, or deception obtains a trade secret shall be fined not more than \$5,000,000 or imprisoned not more than 15 years, or both. Any organization that commits any offense described shall be fined not more than the greater of \$10,000,000 or 3 times the value of the stolen trade secret to the organization, including expenses for research and design and other costs of reproducing the trade secret that the organization has thereby avoided. <https://www.law.cornell.edu/uscode/text/18/part-I/chapter-90>.
- ⁷ ANAB is part of the USMCA and IAF MLA, where the purpose of these agreements are to ensure mutual recognition of accredited certification and validation/verification statements between agreement signatories, and subsequent acceptance of ANAB accredited certification and validation/verification statements by professional engineers based upon having one universal approval process for the timely approval of innovative materials, products, designs, services, assemblies and/or methods of construction.
- ⁸ <https://anabpd.ansi.org/Accreditation/product-certification/DirectoryListingAccredited?menuID=1&prgID=1>
- ⁹ https://iaf.nu/en/member-details/?member_id=91
- ¹⁰ https://iaf.nu/en/member-details/?member_id=14
- ¹¹ NBC Division A Clause A-1.2.1.1.(1)(b) provides information on code compliance via alternative solutions and defines alternative solutions as "...achiev[ing] at least the minimum level of performance required by Division B." NBC Division C Section 2.3 includes additional guidance for documentation of alternative solutions.
- ¹² <https://anabpd.ansi.org/Accreditation/product-certification/AllDirectoryDetails?prgID=1&OrgID=2125&statusID=4>
- ¹³ Through ANAB accreditation and the IAF MLA, DrJ certification can be used to obtain material, product, design, or method of construction approval in any jurisdiction or country that has IAF MLA Members & Signatories to meet the Purpose of the MLA – "certified once, accepted everywhere".
- ¹⁴ <https://iaf.nu/en/about-iaf-mla/#:~:text=required%20to%20recognise>
- ¹⁵ The National Conformity Assessment Principles states, "Product regulations and standards may vary from country to country. If these are set arbitrarily, they could be deemed as protectionist. The World Trade Organization (WTO) Agreement on Technical Barriers to Trade (TBT Agreement) is intended to ensure that technical regulations, standards and conformity assessment procedures of member countries do not create unnecessary obstacles to trade. Under the TBT Agreement, members of the WTO agree to use international standards, including conformity assessment standards and guides, as a basis for their technical requirements."